

Treasures of Southeast Asia



FEATURING THE
EASTERN & ORIENTAL EXPRESS



WORLD AFFAIRS
COUNCIL OF
PHILADELPHIA
& PARTNERS

March 12-27, 2025



WORLD AFFAIRS
COUNCIL OF
PHILADELPHIA
& PARTNERS

Dear Council Travelers,

Join an enthralling 12-night adventure through Singapore, Malaysia, Thailand and Cambodia: extraordinary destinations blessed with long histories and diverse cultures. From modern Singapore and wild Malaysia to vibrant Bangkok and the towering Angkor temples of Siem Reap, this adventure will unlock a wealth of relics across Southeast Asia.

Start your adventure by exploring dazzling, multi-cultural Singapore followed by an unforgettable journey aboard the elegant Eastern & Oriental Express train through wild Malaysia, where you'll choose from included excursions on Penang Island. Then, fly to Bangkok to discover ancient temples, exotic sights and bustling waterways. Plus, walk through the bygone streets of Ayutthaya, Thailand's ancient capital city.

The journey continues in Cambodia amid Angkor's moss-covered ruins, an experience to remember. Along the way, learn to cook traditional dishes of rice noodles and dumplings, and meet friendly locals who are eager to share their lives with you. This experience will connect you with the authentic culture of Southeast Asia!

This trip combines the security, ease and value of group travel with opportunities for independent exploration. Space on this exclusive journey is limited, and the trip is sure to sell out quickly, so make your reservations today!

Sincerely,

Andrew Haught

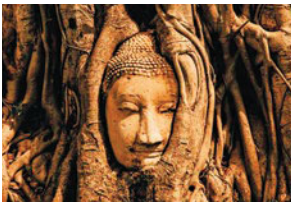
Director of Travel

World Affairs Council of Philadelphia

Cooperating Councils: AKRON ♦ ALABAMA ♦ ALASKA ♦ ARIZONA ♦ ATLANTA ♦ AUSTIN ♦ BALTIMORE ♦ BOSTON ♦ BUFFALO ♦ CHARLESTON ♦ CHARLOTTE ♦ CHICAGO ♦ GREATER CINCINNATI ♦ CLEVELAND ♦ COLORADO SPRINGS ♦ COLUMBUS ♦ CONNECTICUT ♦ DALLAS-FORT WORTH ♦ DAYTON ♦ DENVER ♦ GREATER HAMPTON ROADS ♦ HARRISBURG ♦ HILTON HEAD ♦ HOUSTON ♦ INLAND SOUTHERN CALIFORNIA ♦ JACKSONVILLE ♦ KANSAS CITY ♦ KENTUCKY/SOUTH INDIANA ♦ LAS VEGAS ♦ LOS ANGELES ♦ MAINE ♦ MID-HUDSON VALLEY ♦ MILWAUKEE ♦ MONTANA ♦ MONTEREY BAY ♦ NAPLES ♦ NEW ORLEANS ♦ NEW HAMPSHIRE ♦ NORTHERN CALIFORNIA ♦ ORANGE COUNTY ♦ OREGON ♦ PALM BEACH ♦ PEORIA ♦ PITTSBURGH ♦ GREATER READING ♦ RHODE ISLAND ♦ RICHMOND ♦ SAN ANTONIO ♦ SAN DIEGO ♦ SANTA FE ♦ SAVANNAH ♦ SEATTLE ♦ SONOMA COUNTY ♦ SOUTH TEXAS ♦ ST. LOUIS ♦ STAMFORD ♦ TACOMA ♦ TENNESSEE ♦ TRAVERSE CITY ♦ UTAH ♦ VERMONT ♦ WESTERN COLORADO ♦ WESTERN MICHIGAN ♦ WESTERN NORTH CAROLINA

UNESCO World Heritage

1. **Angkor**, Cambodia
2. **Historic City of Ayutthaya**, Thailand
3. **George Town, Historic City of the Straits of Malacca**, Malaysia



Ayutthaya



Angkor



A World of Discovery



Your next adventure begins in Southeast Asia, where grandeur abounds. Tap into the pulse of this fascinating corner of the globe, a fusion of age-old traditions and modern life. From multi-cultural Singapore and stunning Malaysia to irresistible Bangkok and impressive Angkor Wat, you'll stand in awe of centuries-old temples and shimmering palaces, glorious scenery and jungle-shrouded ruins. This specially crafted program brims with wonder!

Top: Supertrees at Gardens by the Bay, Singapore
Above: Eastern & Oriental Express hospitality
Cover: E&OE winding through the landscapes of Malaysia
Mail panel: Angkor Wat | Chao Phraya River, Bangkok

Inspiring Moments



- Delight in the **glories of Southeast Asia**, a medley of energetic cities, stunning landscapes and ancient ruins.
- Stroll through a remarkable floral oasis at **Singapore's Gardens by the Bay**.
- Revel in the Golden Age of travel aboard the iconic **Eastern & Oriental Express** through lush Malaysia.
- Marvel at the ancient temples and complexes of **Angkor Wat, Ta Prohm** and **Angkor Thom**.
- Cruise the legendary **Chao Phraya River** and **ride a tuk-tuk** to experience traditional Thai life up close.
- Thrill to a **Cambodian Circus** cultural performance of acrobatics.
- Savor the tantalizing flavors of Southeast Asia's renowned **food culture**.
- Experience three **UNESCO World Heritage sites**.



Merlion Park, Singapore

Days 1 & 2 | In Transit

Depart gateway city for Singapore. 🌐
Cross the international date line.

Day 3 | Singapore

Arrive in Singapore, transfer 🔄 and check in to the Shangri-La Singapore. Meet your fellow travelers at a Welcome Reception tonight.

Day 4 | Singapore

Enrichment: Contemporary Singapore.

Singapore Highlights. On a panoramic tour, admire views of the city's skyline and Marina Bay, and see the iconic, mythical Merlion in Merlion Park. In the Civic District, see the Padang, City Hall and the Singapore Cricket Club. Visit Thian Hock Keng Temple, one of the most important Hokkien temples in Singapore. Sample popular regional dishes at lunch.

Multicultural Singapore. Uncover Singapore's diverse cultures. Explore the Malay enclave, Kampong Glam, with its golden-domed Sultan Mosque. See Little India's exotic spice markets and Chinatown's lovingly restored shophouses.

Day 5 | Singapore

🌐 **AHI Connects | Peranakan Heritage.** Travel to an enclave to learn how to make Chinese dumplings and admire traditional beadwork and embroidery with your local Peranakan hosts.

Free Time: Enjoy lunch and free time at leisure.

Gardens by the Bay. Discover this landmark oasis of floral features and garden artistry. See the iconic Supertrees, stroll the Flower Dome, the world's largest glass greenhouse, and discover Cloud Forest's unique aerial walkways.

Day 6 | Singapore | Malaysia

Wild Malaysia. Travel aboard the elegant carriages of the Eastern & Oriental Express (E&OE) to discover wild Malaysia. Pass through lush green landscapes while enjoying afternoon tea, elegant dinners, on-board entertainment, and alighting for enriching excursions.

Day 7 | Malaysia | Marapoh

Taman Negara National Park. Marvel at some of the wildest parts of Malaysia en route to one of the oldest tropical rain forests in the world. Amid the dense jungle, wide rivers and lush mountains, interact with local villagers engaged in the Save Wild Tigers conservation efforts.

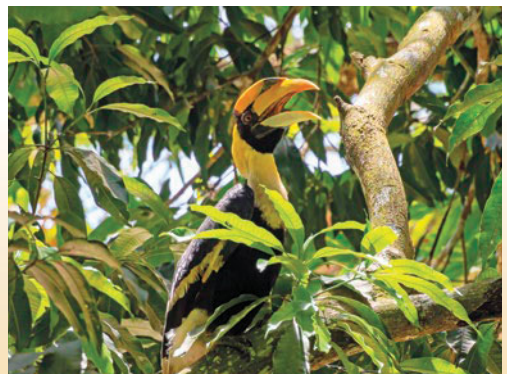
Evening Entertainment. Savor dinner and live entertainment in the Piano Bar Car tonight.

Day 8 | Malaysia | Penang Island

🌐 **PYJ | Choose one of these excursions:**

- **George Town Old Quarter.** Take a guided tour of this colonial area to see architecture, temples, and an opera and puppet house.

Great hornbill, Taman Negara National Park





Ayutthaya

- **Peranakan Cooking Discovery.** Prepare local dishes in a hands-on cooking class.
- **Independent Exploration.** Explore the area with a trishaw driver and guide.

Day 9 | Malaysia | Bangkok, Thailand

Disembark the E&OE, transfer 🚗 and fly ✈️ to Bangkok. Check in to the Peninsula Bangkok.

Chao Phraya River Cruise. Take an evening cruise aboard a converted rice barge to take in Bangkok's illustrious landmarks while savoring cocktails and dinner amid the sparkling lights.

Day 10 | Bangkok

Enrichment: Thailand's History & Culture.

Bangkok Highlights. Board a private boat and cruise the river and canal past homes, temples and a local market en route to visit the Grand Palace and the 15th-century Emerald Buddha Temple. Then, take a tuk-tuk ride to Wat Pho to see the tranquil, reclining Buddha. Experience lunch at the famed Blue Elephant.

🕒 **Elective | Sala Rim Naam.** Join an evening immersed in Thai culture to experience a Thai dance show and a dinner of classic dishes.

Bang Pa-In Palace



Day 11 | Bangkok | Ayutthaya

Ayutthaya. Start today at the Bang Pa-In Palace, a summer residence for the kings of Thailand. Continue to the ancient city of Ayutthaya, the capital of Thailand from 1350 to 1767. Stand in awe at the magnificent ruins of timeworn Buddhas and towering wats. Then, cruise back to Bangkok, viewing Thai river life as you and enjoy a delicious lunch on board.

Day 12 | Siem Reap, Cambodia

Transfer 🚗 and fly ✈️ to Siem Reap. Check in to the Sofitel Angkor Phokeethra Resort.

Siem Reap. Get to know this quaint provincial capital on a tuk-tuk ride. Step into an art and dance center to see local artisans perform.

Enrichment: Temples of Angkor.

Day 13 | Siem Reap

Discover Angkor Wat. Today, discover this 12th-century jewel of Angkor Archaeological Park. Admire aspara carvings and reflective pools, and explore the gallery of bas-relief murals, the finest in Khmer art. Contemplate the spiritual significance of this ancient world!

Ta Prohm



Included Features



Accommodations (with baggage handling)

- **3 nights** in Singapore at the deluxe Shangri-La Singapore.
- **3 nights** aboard the deluxe Eastern & Oriental Express train, Malaysia.
- **3 nights** in Bangkok, Thailand, at the deluxe Peninsula Bangkok.
- **3 nights** in Siem Reap, Cambodia, at the deluxe Sofitel Angkor Phokeethra Golf and Spa Resort.

Transfers (with baggage handling)

- Flights to Bangkok and Siem Reap and all deluxe motor coach transfers in the Land Program.

Extensive Meal Program

- 12 breakfasts, 7 lunches and 5 dinners, including a Farewell Dinner; tea or coffee with all meals, plus wine with dinner.

Your One-of-a-Kind Journey

- **Small group:** Sized just right at 28 guests.
- **Enrichment by expert speakers** enhances your insight into the region.
- **Engaging excursions** showcase the local culture, heritage and history.
- **Personalize Your Journey | PYJ |** A choice of excursions in selected locales.
- **Electives** and free time to pursue your individual interests.
- **AHI Connects:** Local immersion.
- A Welcome Reception to mingle with fellow travelers.
- A personal VOX headset to hear your English-speaking guide clearly.
- Tipping of guides and drivers.
- Complimentary travel mementos.
- **AHI Sustainability Promise:** We strive to make a positive impact wherever we travel.

Emerald Buddha Temple, Bangkok



Note About Activity Levels

We have designated activity levels for all excursions on this program. For more details, please call or visit our website.

Excursions on this itinerary require:

- walking on cobblestones, unpaved paths and/or uneven surfaces
- getting on/off motor coaches and boats

AHI Connects | Local Life. Engage with a Cambodian family while making rice noodles.

Free Time: Relish leisure time in Siem Reap.

Cambodian Circus. Delight in a cultural show of dance, acrobatics and stories of the Khmer.

Day 14 | Siem Reap

Angkor's Temples. Explore more history at Angkor Thom, the last capital of the Khmer Empire. Note the amazing Bayon Temple. Its 54 towers feature carvings of more than 200 smiling faces. Continue along jungle-claimed paths to the haunting temples of Ta Prohm. Here, the roots of massive kapok trees have overtaken the buildings. Next, see exquisite carvings at the restored Thommanon temple.

Free Time: Make your own schedule for your final afternoon at leisure in Siem Reap. Gather for a Farewell Dinner and a lively event featuring Khmer classical dance and music.

Days 15 & 16 | In Transit

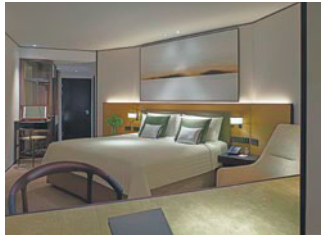
Transfer to the airport for the return flight to your gateway city. Depending on individual flight itineraries, passengers will arrive in North America on Day 15 or Day 16.

Note: Itinerary may change due to local conditions.

Flights and transfers included for AHI FlexAir participants.

Elective experiences available at an additional cost.

Accommodations



Shangri-La Singapore | Singapore



The Peninsula Bangkok | Bangkok, Thailand



Sofitel Angkor Phokeethra Golf & Spa Resort | Siem Reap, Cambodia



Angkor Thom



Reserve your trip today!

To book your journey,
please call our World Affairs Council
at **800-942-5004 x231 or x209** or
visit **www.wacphila.org/travel**.

Program Dates

Travel dates †

March 12-27, 2025

† Travel dates include any overnights required for international travel. These dates may vary depending on air schedules.

Tour dates*

March 14-26, 2025

* Tour dates begin on the scheduled arrival date at your destination and end on the scheduled departure date from your destination.

Land Program

Category	Full Price	Early Booking Special Price*
P-Pullman (62 sq. ft.)	\$9,540	\$8,790
S-State (84 sq. ft.)	\$11,640	\$10,890

Early Booking Special Price includes \$750 special savings.

*Early Booking Special Price valid if booked by date on address panel and paid in full at booking. If you pay only your deposit by early booking date, you still save \$250 per person.

VAT in the amount of \$495 per person is included in the above prices.

All prices quoted are in USD, per person, based on double occupancy and do not include air transportation costs (unless otherwise stated). Special offers, promotions and discounts cannot be combined.

The Pullman Suite single supplement is an additional \$4,995.

The State Suite single supplement is an additional \$6,495.

There is a limited availability for all single accommodations.

Please note: Program-specific terms and conditions are available at <https://worlda.ahitravel.com/destinations/1898A?schoollid=235>. You can also request a copy from our travel experts. Any payment to AHI Travel constitutes your acceptance of the terms and conditions set out therein, including but not limited to the cancellation terms.

AHI FlexAir

Let us arrange your flights

Our experts are ready to assist you in booking flights. Our personalized air program offers the following advantages:

- **price guarantee** to protect you from fuel surcharge increases after ticket purchase
- arrival and departure **transfers** on group dates
- **flexibility** to change or cancel your reservation before departure on most flights (Fees may apply).
- **assistance** in the event of schedule changes or delays

CA Seller of Travel Reg. No. 2028271-20. FL Seller of Travel Reg. No. ST-33300

IA Seller of Travel Reg. No. 520. OH Seller of Travel Reg. No. 8889139.

WA Seller of Travel Reg. No. 601-820-781.

PARTICIPATING AIRLINES-all IATA and ARC Member Carriers

©2024 AHI Travel Printed in the USA



EASTERN & ORIENTAL EXPRESS

Board the green-and-gold carriages of the Eastern & Oriental Express, and experience the Golden Age of travel as you wind through some of the most exotic, untouched countrysides on Earth. The E&OE offers a luxurious experience complemented by an unparalleled encounter with Southeast Asia's far-flung landscapes.

Elegance and attention to detail make riding the E&OE an unforgettable treat. Orchids and frangipani flowers perfume the air. Stewards deliver freshly baked croissants and delicately carved local fruits at sunrise. Feel like you are dining in one of the world's top restaurants when you take your seat in one of the lavishly decorated dining cars. Enveloped in rose-wood paneling, you will enjoy refined service and gourmet meals prepared with the freshest ingredients.

As the sun sets, listen to the sounds of the forest as you relax in the open-air Observation Car and sip a Shanghai Express while the pianist plays your old favorites in the piano bar.



AHI Travel Expertise



From your reservation to your return home, we are here to ensure you have the adventure of a lifetime.

Before you go:

Travel Consultants stand ready to answer your questions as they guide you through the reservation process.

Travel & Air Coordinators each offer their personalized assistance with flights, electives and special requests.

Travel Information provides pre-departure details and enrichment about your destination.

Once you arrive:

Your Travel Director, a seasoned, multilingual professional, manages daily logistics so you enjoy a seamless experience.

Handpicked Expert Guides offer fascinating insights and share their passion for their country with you.

Knowledgeable Lecturers deepen your appreciation for the region and its history, culture and current events.





WORLD AFFAIRS
COUNCIL OF
PHILADELPHIA
& PARTNERS

World Affairs Council of Philadelphia
One Penn Center
1617 JFK Blvd.
Suite 1660
Philadelphia, PA 19103
EOEXP25 232

800-942-5004 x231 or x209
www.wacphila.org/travel



Uncover the awe-inspiring wonders of Southeast Asia!

World Affairs Council shares **AHI Travel's** mission to deliver inspirational educational and cultural travel programs that delight travelers.

You can rely on:

- Experienced Travel Directors who attend to every detail of your journey.
- An exceptional travel value.
- Unique access to local sites.
- Flexibility and customization.
- Safety and security.

Please call or refer to our website for the most current program information, discounts and pricing.

Presorted Std.
U.S. Postage
Paid
AHI Travel