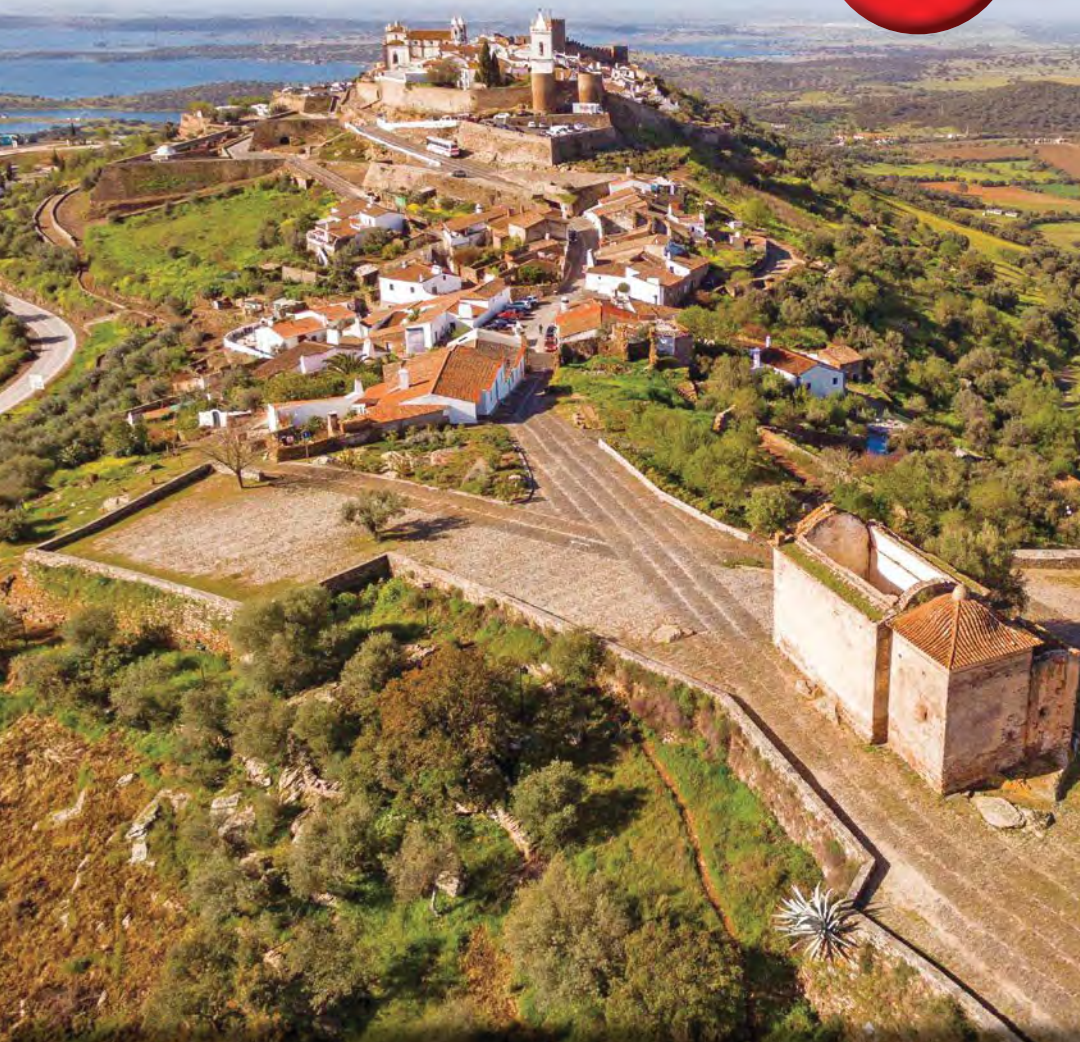


Portugal

ALLURING ALENTEJO

NO SINGLE
SUPPLEMENT
for Solo
Travelers



SPONSORED BY



WISCONSIN
ALUMNI
ASSOCIATION

September 22-30, 2024

Other dates available upon request.



Dear Badger Traveler,

Journey with us to Portugal's Alentejo, a less explored region graced with pastoral landscapes of cork forests, olive groves and wheat fields! Revel in timeless beauty, delectable food and flavorful wines over six nights in Vila Viçosa, one of its sparkling marble towns, and then take in dynamic Lisbon during a one-night stay.

Packed with exciting outings, this well-rounded itinerary captures the vibrant culture and relaxed pace of life in this captivating part of Portugal. Nibble on tempting samples at a farmers market in Estremoz, cook authentic dishes in a private home in Évora, and linger over satisfying meals at a scenic winery and a beautiful estate. Plus, guided tours and lectures with experts introduce you to Portugal's rich history.

Feel at ease knowing that your Travel Director will handle the details, leaving you free to focus on the pleasures of your destination. And experience it all amid the camaraderie of a small group while also having ample free time to make your own discoveries.

Enjoy a marvelous area of Portugal often overlooked by travelers! Space is limited, so please make your reservation today by calling AHI Travel at **888-462-5831**. Please be sure to review the tour's Terms and Conditions on the AHI website so that you can know what to expect should the tour be unable to operate or should you make the decision to cancel prior to departure.

Sincerely,

Sarah Schutt
Chief Alumni Officer & Executive Director of the WAA

P.S. This program is open to all alumni and friends of UW-Madison.

Traveling with the Wisconsin Alumni Association® (WAA) is now a member benefit, so although anyone – UW-Madison graduate or not – is welcome to explore the world with Badger travelers, at least one person in your party must be a WAA member to participate in a WAA tour. Membership information is available at uwalumni.com/membership.

Please review the WAA Travel Disclaimer in detail at: <https://www.uwalumni.com/resources-services/travel/travel-disclaimer/>.

If you no longer wish to receive travel-related brochures, please contact WAA Travel at 888-WIS-ALUM (888-947-2586).

SPACE IS LIMITED. BOOK NOW!
FOR ADDITIONAL INFORMATION call AHI Travel at 888-462-5831
OR WAA AT 888.WIS.ALUM (888.947.2586)
OR VISIT WISCON.AHITRAVEL.COM
UWALUMNI.COM/TRAVEL

UNESCO World Heritage

1. Historic Center of Évora, Portugal
2. Archaeological Ensemble of Mérida, Spain
3. Garrison Border Town of Elvas and its Fortifications, Portugal
4. Monastery of the Hieronymites and Tower of Belém in Lisbon, Portugal

Elvas and its Fortifications





A World of Discovery



Be captivated by Portugal's best-kept secret, the splendid Alentejo, celebrated for its vistas of olive groves, whitewashed villages and cork forests. It's also an ideal destination for lovers of outstanding cuisine and wine! Embrace its charms as you stroll through radiant marble towns and the fascinating cities of Évora and Elvas, plus revel in Lisbon's historic treasures. Best of all, taste enticing wines and olive oils, whip up classic dishes, and try tempting delicacies at a delightful farmers market!

Top: Views of the Alentejo from Monsaraz

Above: Winery visit | Cover: Aerial view of Monsaraz

Mail panel: Fado musician | Jerónimo's Monastery, Lisbon

Inspiring Moments



- Delight in the Alentejo's **breathtaking capital, Évora**, an open-air museum.
- Spend the day in **spectacular Lisbon**, taking in its Old-World grandeur.
- Learn how to **prepare traditional Portuguese dishes** during a fun, hands-on lesson in a private home.
- Enjoy a wonderful visit to a **town market** to sample treats and chat with locals.
- Savor delectable food and wines amid the warm ambience of a **family-owned winery** and a **country estate**.
- Journey to **Spain** to admire impressively preserved **Roman ruins in Mérida** and the Portuguese flair of **lovely Olivenza**.
- Experience four **UNESCO World Heritage sites**.

ALUMNI CAMPUS
ABROAD®



Temple of Diana, Évora

Day 1 | In Transit

Depart your gateway city for Lisbon, Portugal. 🌐

Day 2 | Lisbon, Portugal | Vila Viçosa

Upon arrival, transfer 🚗 to Vila Viçosa and check in to the Alentejo Marmoris Hotel & Spa. Gather for a Welcome Reception and Dinner.

Day 3 | Vila Viçosa | Borba

The Marble Route—Vila Viçosa & Borba.

Portugal's acclaimed white marble has been extracted from the region since Roman times, and towns around the Alentejo gleam with the local stone, which adorns façades, fountains, doorsteps, benches and pavement. Take a guided walk through Vila Viçosa, and tour the majestic, marble-clad Ducal Palace, the royal house of the Bragança dynasty. Then, admire Borba's landmarks like the Fonte das Bicas and the 16th-century Church of São Bartolomeu.

Winery Vila Santa. With several hundred indigenous grape varieties, Portugal boasts world-class wines, including those from the highly regarded Alentejo wine region. Enjoy a tour and a delicious lunch paired with fine wines at this beautiful winery.

Enrichment: Alentejo—Portugal's Best-Kept Secret. An expert examines an intriguing history shaped by the Romans, Moors and exploration.

Free Time: Make plans for dinner in Vila Viçosa.

Day 4 | Évora

Évora. Surprises await around every corner in the Alentejo's capital city, an outdoor museum of Portugal's multifaceted history. Within this

UNESCO World Heritage site, see Roman ruins, Moorish-influenced architecture, handsome noble houses from Évora's pinnacle as a royal city, and whitewashed homes bedecked with *azulejos*, traditional ceramic tiles. On your guided tour, visit one of Évora's most unusual monuments, the Chapel of Bones, constructed by Franciscan monks in the 16th century.

🌐 AHI Connects | Cooking at Sofia's House.

Near Évora's old town, enjoy a warm welcome at Chef Sofia's farmhouse and gardens for an engaging session in the kitchen that covers ingredients, techniques and cultural insights. Then, dig into your tantalizing dishes!

Free Time: Your evening is at leisure.

Day 5 | Monsaraz | São Pedro do Corval

Monsaraz. Take in the medieval atmosphere of this picturesque, hilltop village and sweeping countryside views during a guided stroll. Next, travel to Herdade do Esporão, a family-owned business on a large estate. Learn how their olive oil is made on a tour, take part in a unique

Ducal Palace, Vila Viçosa





Tower of Belém, Lisbon



Lisbon

olive oil tasting and relax over a tasty lunch served with the estate's wines. Later, stop in São Pedro do Corval, known for its pottery workshops where clay is traditionally molded by hand on a wheel, and watch artisans craft colorful pieces at a studio.

Dine tonight at a restaurant in Vila Viçosa.

Day 6 | Mérida, Spain | Olivenza | Vila Viçosa, Portugal

After breakfast, depart for Mérida, Spain.

Mérida. Founded by Emperor Augustus in 25 B.C., Mérida was the capital of the Roman province of Lusitania, which included most of present-day Portugal. On a guided tour of its superb ruins, a UNESCO World Heritage site, envision the glory of the Roman Empire as you appreciate the beauty of the theater and stand in the amphitheater where gladiators battled. Savor lunch at the Parador de Mérida.

Olivenza, Bridge of Cultures. Until 1801, this pretty town was part of Portugal, and its

architecture and ambience reflect this dual heritage. Take a guided walk and check out interesting cultural artifacts at a museum.

Free Time: Set your own agenda this evening.

Day 7 | Estremoz | Elvas

Enrichment: Fado, the Portuguese Song.

Delve into this traditional music imbued with deep sadness and longing.

AHI Connects | Estremoz Market Visit & Tasting. At the bustling market in Estremoz, be a part of the local scene as you and your guide chat with the vendors and sample fresh cheeses, breads, pastries and more.

Elvas. A UNESCO World Heritage site, this border town once protected the key crossing between Lisbon and Madrid and features extensive fortifications built in the 17th century. Hear about its strategic significance from your guide and meander through inviting squares like the strikingly tiled Praça da República.

Pottery artisan



Praça da República, Elvas





Enjoy lunch on your own while in Elvas. Meet for a delectable dinner in the hotel.

Day 8 | Lisbon

Check out of the hotel and head to Lisbon.

Lisbon. One of Europe's most stunning cities, Lisbon brims with vibrant character. See its highlights on a panoramic tour and guided walk. Start at the magnificent Jerónimo's Monastery, a UNESCO World Heritage site, which exemplifies Portugal's wealth during the Age of Discovery. Go inside the exquisite church and cloisters to see carvings in the richly ornamented Manueline style. Afterward, marvel at the grand Tower of Belém and the Monument to the Discoveries. Take a break for lunch during your excursion.

Check in to the Dom Pedro Lisboa.

Join your fellow travelers for tonight's Farewell Reception and celebrate your time in Portugal.

Free Time: Lisbon's stellar cuisine awaits!

Day 9 | In Transit

After breakfast, transfer to the airport for the return flight to your gateway city.

Note: Itinerary may change due to local conditions.

Flights and transfers included for AHI FlexAir participants.

Note About Activity Levels

We have designated activity levels for all excursions on this program. For more details, please call or visit our website.

Excursions on this itinerary require:

- walking on cobblestones, unpaved paths and/or uneven surfaces
- getting on and off motor coaches

Included Features



Accommodations (with baggage handling)

- **6 nights** in Vila Viçosa, Portugal, at the deluxe Alentejo Marmoris Hotel & Spa.
- **1 night** in Lisbon at the first-class Dom Pedro Lisboa.

Transfers (with baggage handling)

- Deluxe motor coach transfers during the Land Program.

Extensive Meal Program

- 7 breakfasts, 5 lunches and 3 dinners, including a Welcome Dinner; tea or coffee with all meals, plus wine with dinner.

Your One-of-a-Kind Journey

- **Small group:** Sized just right at 28 guests.
- **AHI Travel Assurance plan** covers Accident and Sickness Medical Expense, Trip Delay and Emergency Evacuation for U.S. residents.
- **Enrichment by expert speakers** enhances your insight into the region.
- **Engaging excursions** showcase the local culture, heritage and history.
- **AHI Sustainability Promise:** We strive to make a positive impact wherever we travel.
- **AHI Connects:** Local immersion.
- Welcome and Farewell Receptions to mingle with fellow travelers.
- A personal VOX headset to hear your English-speaking guide clearly.
- Tipping of guides and drivers.
- Complimentary travel mementos.

Vila Viçosa

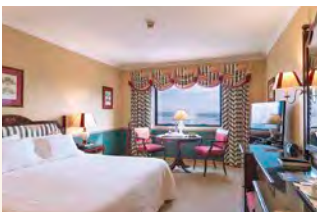


Accommodations

Our travel experts have carefully selected these hotels for their prime locations near famous landmarks. At the deluxe Alentejo Marmoris Hotel & Spa, savor exceptional service and luxurious comfort in an elegant setting decorated with marble flourishes. The first-class Dom Pedro Lisboa in the heart of Lisbon's best shopping area features friendly, attentive staff and spacious guest rooms. Of utmost importance is the superior quality of each property's services, amenities and accommodations, allowing you to enjoy your stay fully.



Alentejo Marmoris Hotel & Spa | Vila Viçosa



Dom Pedro Lisboa | Lisbon



Reserve your trip today!

To book your journey,
please call our AHI Travel Experts
at **888-462-5831** or
visit **wiscon.ahitravel.com**.

Program Dates

Travel dates †

September 22-30, 2024

† Travel dates include any overnights required for international travel. These dates may vary depending on air schedules.

Tour dates*

September 23-30, 2024

* Tour dates begin on the scheduled arrival date at your destination and end on the scheduled departure date from your destination.

Land Program

Full Price	\$3,945
-------------------	----------------

Special Savings	\$250
------------------------	--------------

Special Price*	\$3,695
-----------------------	----------------

*Special Price valid if booked by the date found on the address panel.

Receive Bonus Savings when you Pay in Full at booking.

Call for details.

VAT is an additional \$295 per person.

All prices quoted are in USD, per person, based on double occupancy and do not include air transportation costs (unless otherwise stated).

Special offers, promotions and discounts cannot be combined.

Single supplement waived for solo travelers! This offer is limited, capacity-controlled and tends to sell out quickly.

Please note: Program-specific terms and conditions are available at <https://wiscon.ahitravel.com/destinations/1786A?schoold=190>. You can also request a copy from our travel experts. Any payment to AHI Travel constitutes your acceptance of the terms and conditions set out therein, including but not limited to the cancellation terms.

AHI FlexAir

Let us arrange your flights

Our experts are ready to assist you in booking flights. Our personalized air program offers the following advantages:

- **price guarantee** to protect you from fuel surcharge increases after ticket purchase
- arrival and departure **transfers** on group dates
- **flexibility** to change or cancel your reservation without penalty up to 60 days before departure on most flights
- **assistance** in the event of schedule changes or delays



Amphitheater, Mérida, Spain



Cooking at Sofia's farmhouse near Évora



Azulejos

AHI Travel Expertise



From your reservation to your return home, we are here to ensure you have the adventure of a lifetime.

Before you go:

Travel Consultants stand ready to answer your questions as they guide you through the reservation process.

Travel Coordinator offers personalized assistance with flights, electives and special requests.

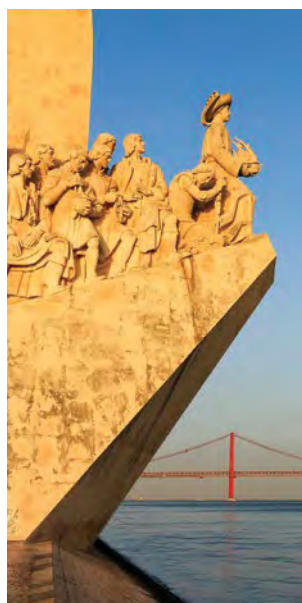
Travel Information provides pre-departure details and enrichment about your destination.

Once you arrive:

Your Travel Director, a seasoned, multilingual professional, manages daily logistics so you enjoy a seamless experience.

Handpicked Expert Guides offer fascinating insights and share their passion for their country with you.

Knowledgeable Lecturers deepen your appreciation for the region and its history, culture and current events.



Monument to the Discoveries, Lisbon



**WISCONSIN
ALUMNI
ASSOCIATION**

WAA Travel
650 North Lake Street
Madison, WI 53706-1476

PORTALEN24 33

888-462-5831

wiscon.ahitravel.com



Charming Portuguese towns, plus lovely food and wines!

AHI Travel's mission is to deliver inspirational, educational and cultural programs that delight travelers.

With AHI you can rely on:

- Experienced Travel Directors who attend to every detail of your journey.
- An exceptional travel value.
- Unique access to local sites.
- Flexibility and customization.
- Safety and security.



**Please call or refer
to our website for the
most current
program information,
discounts and pricing.**

Presorted Std.
U.S. Postage
Paid
AHI Travel