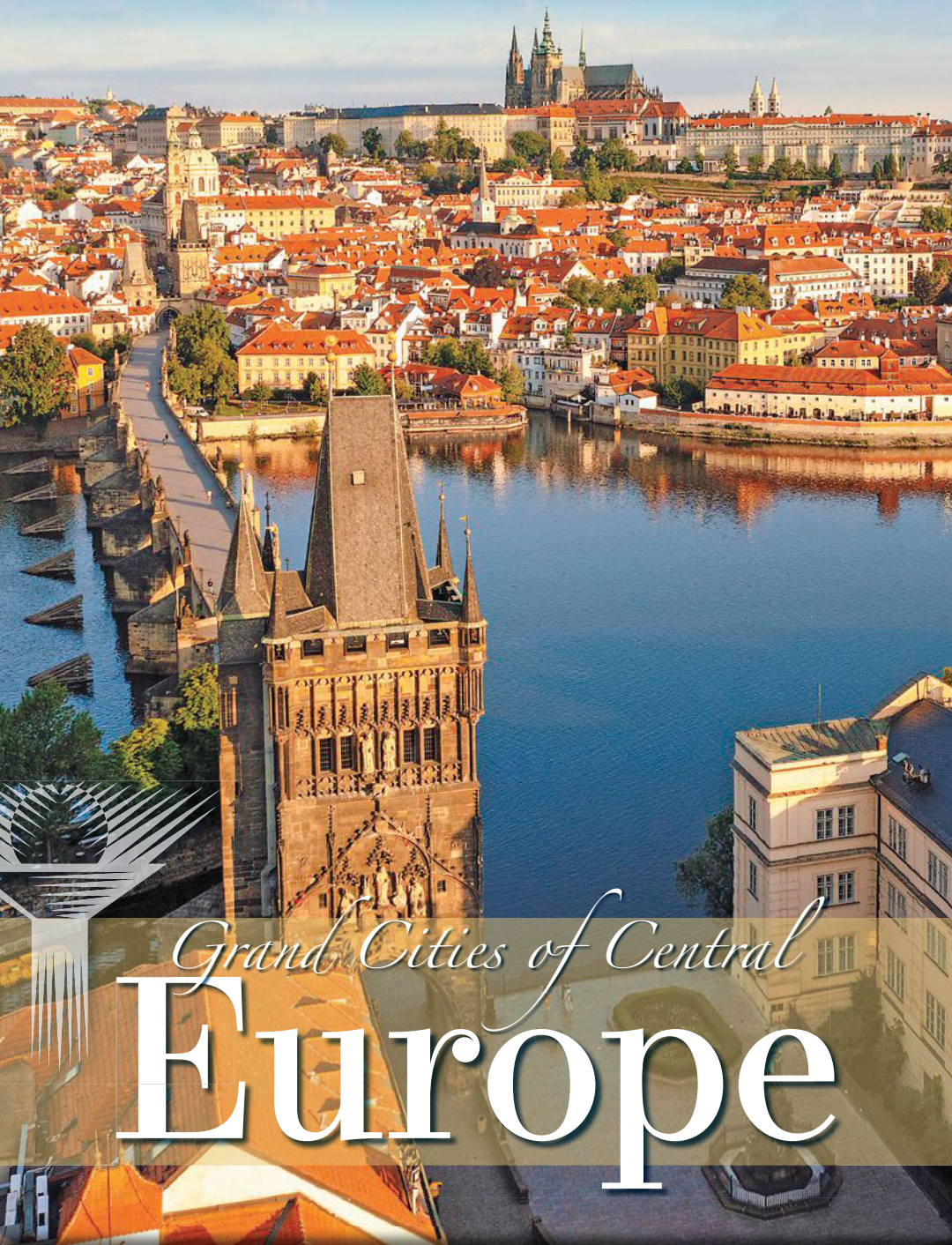


BERLIN | DRESDEN | PRAGUE



*Grand Cities of Central*  
**Europe**

SPONSORED BY

**UCLA** Alumni

September 3-12, 2024

Featuring Dr. Susan Kresin

Department of Slavic, East European and Eurasian Languages



**Dr. Susan Kresin**  
**Department of Slavic,  
East European and  
Eurasian Languages**

Dr. Susan Kresin has been working in the Department of Slavic, East European and Eurasian Languages since 1996. She teaches Czech, Russian, courses on Slavic linguistics, and courses on Central and Eastern European culture that integrate film, literature, music and news media to bridge historical legacies with current perspectives. Her publications include edited collections of articles on Czech culture and on heritage-language speakers, a textbook of Czech, and articles on language pedagogy, comparative linguistics, and corpus-based linguistics. Her current focus of integration in language and area studies courses is media literacy.

**UCLA Alumni**

**Dear UCLA Alumni and Friends,**

Explore an exceptional trio of illustrious cities on this eight-night journey steeped in compelling history, vibrant culture and moving music! Witness Berlin's acclaimed landmarks, tour the Berlin Wall Memorial and enjoy an intimate piano concert. In Dresden, admire splendidly restored architecture, sample tasty Saxon delicacies and attend a musical performance inside the elegant Dresden Zwinger. Take in Prague's magnificent old town and castle, plus relish a wonderful concert in a baroque hall within Lobkowitz Palace.

Other highlights include a morning cruise along the Elbe River through the striking Saxon Alps, and a visit to see the impressive art collection of Dresden's Old Masters Picture Gallery. You'll also stroll through Frederick the Great's terraced gardens and visit Cecilienhof Palace, site of the historic 1945 Potsdam Conference.

This carefully crafted, small-group experience features deluxe, centrally located hotels, enrichment from expert guides and lecturers, a professional Travel Director and a generous meal plan with wine at dinner. With so many appealing features, this program is attracting lots of attention, so ensure your place by reserving today!

Regards from Westwood,

Christel Aragon  
Director, Alumni Travel

UCLA Alumni Travel is an advantage reserved for UCLA Alumni Association sustaining donors. Sustaining donors include Gold, Life and Blue Members as well as anyone who has made a qualifying donation of \$100 or more to the UCLA Alumni Association Support Fund in the past year.

**UNESCO World Heritage**

1. **Palaces & Parks of Potsdam and Berlin, Germany**
2. **Historic Center of Prague, Czech Republic**



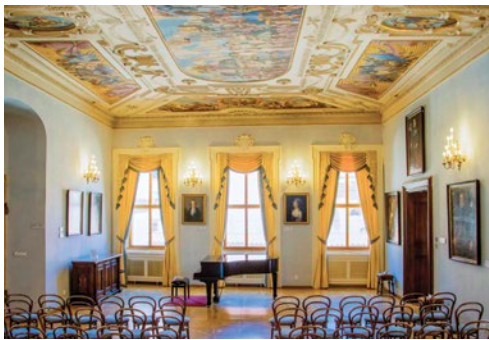
*Cecilienhof Palace, Potsdam*



*Sanssouci gardens, Potsdam*



# A World of Discovery



Explore the celebrated cities of Berlin, Dresden and Prague, steeped in Old-World grandeur and vibrant culture! Revel in an enriching journey brimming with engaging excursions, concerts and insights about German and Czech history. Appreciate each city's special character, shaped by tumultuous times and eras of revitalization, with expert guides. Marvel at the last remaining piece of the Berlin Wall, Dresden's divine Church of Our Lady, the regal ambience of Prague Castle and much more!

Top: Music ensemble, Zwinger Palace, Dresden  
Above: Concert Hall, Lobkowitz Palace | Cover: Prague  
Mail panel: Elbe River, Dresden | Brandenburg Gate, Berlin

## Inspiring Moments



- Delight in **three memorable musical performances** at wonderful venues.
- See poignant pieces of 20th-century history in **Berlin**, including the Berlin Wall and Brandenburg Gate.
- Admire breathtaking **Dresden**, transformed with lovingly rebuilt architecture.
- Feel the spirit of **Prague**, one of the most captivating cities in Central Europe.
- Be wowed by the outstanding art at the **Old Masters Picture Gallery**.
- Take in Frederick the Great's magnificent gardens and a stately palace in **Potsdam**.
- Relish the picturesque Saxon Alps on a short **cruise along the Elbe River**.
- Experience two **UNESCO World Heritage sites**.

ALUMNI CAMPUS  
ABROAD®



Reichstag, Berlin

## Day 1 | In Transit

Depart for Berlin, Germany. 🌐

## Day 2 | Berlin, Germany

Arrive and transfer 🚗 to the Hilton Berlin.

Tonight, gather for a Welcome Reception and Dinner.

## Day 3 | Berlin

**Enrichment: A Tale of Two Cities: East Berlin & West Berlin.** Once divided, Berlin was reunited after the infamous Berlin Wall was torn down in 1989. An expert discusses the lasting impact of its two former sectors.

### Panoramic Berlin & Berlin Wall Memorial.

On a scenic tour, see top sites including Brandenburg Gate, the Federal Chancellery, the elegant *Unter den Linden* boulevard and the Reichstag. Then, take a guided walk to view the last preserved section of the Berlin Wall. Stop for lunch with your group during the excursion.

**Free Time:** Get acquainted with the city's pleasant parks, hip cafés and inviting *biertgartens!* Your Travel Director can offer sightseeing and dining suggestions.

## Day 4 | Potsdam | Berlin

**Enrichment: Music in Berlin.** Gain insights on the city's musical history, innovation and artistry from a local expert.

**Potsdam.** Designed in 1914 in the style of an English country manor, Cecilienhof Palace famously served as the setting for the 1945 Potsdam Conference attended by President

Harry S. Truman, British Prime Minister Winston Churchill and Soviet leader Joseph Stalin. Hear about its history on a guided tour. Later, stroll through the formal, terraced Sanssouci gardens. Finish in Potsdam's charming Dutch Quarter with time for lunch and shopping.

🌐 **AHI Connects | Concert at Piano Salon Christophori.** Join your group for exceptional classical music at this eclectic and intimate piano restoration workshop and venue.

## Day 5 | Dresden

Check out of the hotel and depart for Dresden.

**Dresden City & Culinary Tour.** Take a fascinating guided walk in the old town, which has been faithfully reconstructed after the devastation of World War II. Visit the Church of Our Lady, rebuilt to its original baroque splendor, and see the Semperoper, the opera house of Dresden.

Check in to the Hilton Dresden.

**Free Time:** Explore Dresden on your own. Perhaps tour the Green Vault, with Europe's largest treasure collection of jewelry and more amassed by Saxon rulers.

Find a restaurant for dinner at leisure.

## Day 6 | Dresden

**Old Masters Picture Gallery.** View fine paintings and sculptures from the 15th to 18th centuries on a guided tour of this outstanding museum, including renowned art from the Dutch Golden Age and Italian Renaissance.

**Free Time:** Pursue your own interests in Dresden this afternoon.



*Saxon Alps & Elbe River*

**Concert at Dresden Zwinger.** Enjoy an evening of classical music at the Rampart Pavilion, part of the enchanting, baroque Dresden Zwinger complex.

Savor a delectable, post-performance dinner with your group at a restaurant in the old town.

### Day 7 | **Prague, Czech Republic**

---

Check out of the hotel. Travel toward Prague.

**Elbe River Cruise.** On your way, embark on a short boat ride along the Elbe River through the stunning Saxon Alps, notable for the strikingly shaped, craggy Elbe Sandstone Mountains formed by water erosion.

Continue to Prague by motor coach, pausing for a delicious lunch during your journey.

*Church of Our Lady, Dresden*



Check in to the Cosmopolitan Hotel Prague. Regarded as one of Europe's most beautiful cities, Prague boasts a rich array of buildings, palaces, churches and bridges that reflects its evolution over eight centuries.

**Enrichment: Velvet Revolution.** A local expert delves into this pivotal event that led to the end of communism in Czechoslovakia.

**Free Time:** Enjoy dinner on your own tonight.

### Day 8 | **Prague**

---

**Old Town Prague.** On a guided stroll, learn about the Romanesque, Gothic, Renaissance and baroque gems in the historic center.

*Old Town, Prague*



## Included Features



### Accommodations (with baggage handling)

- **3 nights** in Berlin, Germany, at the deluxe Hilton Berlin.
- **2 nights** in Dresden at the deluxe Hilton Dresden.
- **3 nights** in Prague, Czech Republic, at the deluxe Cosmopolitan Hotel Prague.

### Transfers (with baggage handling)

- Deluxe motor coach transfers in the Land Program.

### Extensive Meal Program

- 8 breakfasts, 3 lunches and 3 dinners, including Welcome and Farewell Dinners; tea or coffee with all meals, plus wine, with dinner.

### Your One-of-a-Kind Journey

- **Small group:** Sized just right at 28 guests.
- **AHI Travel Assurance plan** covers Accident and Sickness Medical Expense, Trip Delay and Emergency Evacuation for U.S. residents.
- **Enrichment by expert speakers** enhances your insight into the region.
- **Engaging excursions** showcase the local culture, heritage and history.
- **AHI Sustainability Promise:** We strive to make a positive impact wherever we travel.
- **AHI Connects | Local immersion.**
- Welcome and Farewell Receptions to mingle with fellow travelers.
- A personal VOX headset to hear your English-speaking guide clearly.
- Tipping of guides and drivers.
- Complimentary travel mementos.

Site of former Berlin Wall



**Free Time:** Set off on your own adventures! Perhaps check out the city's splendid spires from the acclaimed Charles Bridge, lined with 30 statues of saints and religious figures.

### Day 8 | Prague



**Prague Castle.** Marvel at this vast, grand castle, the seat of Czech rulers since the ninth century. With your guide, see Castle Square, the Chapel of the Holy Cross and the old Royal Palace. Admire the St. Wenceslaus Chapel inside St. Vitus Cathedral and the tiny, colorful 16th-century homes along Golden Lane once occupied by the castle's guards, goldsmiths and servants. *(Active)*

**Concert at Lobkowitz Palace.** Listen to lovely music by Bach, Beethoven and Mozart, among others, beneath the frescoed ceiling in an ornate, 17th-century baroque Concert Hall within the palace.



**Free Time:** Explore your last afternoon in Prague at leisure.

Tonight, toast your fellow travelers at a Farewell Reception and Dinner.

### Day 9 | In Transit

After breakfast, transfer  to the airport for the return flight  to your gateway city.

**Note:** Itinerary may change due to local conditions.

 Flights and  transfers included for AHI FlexAir participants.

#### Note About Activity Levels

We have designated activity levels for all excursions on this program. For more details, please call or visit our website.

#### Excursions on this itinerary require:

- walking on cobblestones, unpaved paths and/or uneven surfaces
- getting on/off motor coaches and boats

## Accommodations

Our travel experts have carefully selected these deluxe properties for their prime locations in Berlin, Dresden and Prague. They are ideally situated for exploring each city's celebrated landmarks while also providing opportunities to immerse yourself in local life. Of utmost importance is the superior quality of their services, amenities and accommodations, allowing you to enjoy your stay fully.



**Hilton Berlin** | Berlin



**Hilton Dresden** | Dresden



**Cosmopolitan Hotel Prague** | Prague



# Reserve your trip today!

To book your journey, visit  
**[ucla.ahitravel.com/destinations/  
1828A?schoolId=170](https://ucla.ahitravel.com/destinations/1828A?schoolId=170)**  
or contact UCLA Alumni Travel at  
**310-206-0613 | [travel@alumni.ucla.edu](mailto:travel@alumni.ucla.edu)**.

## Program Dates

### Travel dates †

**September 3-12, 2024**

† Travel dates include any overnights required for international travel. These dates may vary depending on air schedules.

### Tour dates\*

**September 4-12, 2024**

\* Tour dates begin on the scheduled arrival date at your destination and end on the scheduled departure date from your destination.

## Land Program

<b>Full Price</b>	<b>\$4,745</b>
<b>Special Savings</b>	<b>\$250</b>
<b>Special Price*</b>	<b>\$4,495</b>

\*Special Price valid if booked by the date found on the address panel.

**Receive Bonus Savings when you Pay in Full at booking.**  
**Call for details.**

VAT is an additional \$395 per person.

All prices quoted are in USD, per person, based on double occupancy and do not include air transportation costs (unless otherwise stated).

Special offers, promotions and discounts cannot be combined.

Single accommodations are an additional \$995 (limited availability).

**Please note:** Program-specific terms and conditions are available at <https://ucla.ahitravel.com/destinations/1828A?schoolId=170>. You can also request a copy from our travel experts. Any payment to AHI Travel constitutes your acceptance of the terms and conditions set out therein, including but not limited to the cancellation terms.

## AHI FlexAir

### Let us arrange your flights

**Our experts are ready to assist you in booking flights. Our personalized air program offers the following advantages:**

- **price guarantee** to protect you from fuel surcharge increases after ticket purchase
- arrival and departure **transfers** on group dates
- **flexibility** to change or cancel your reservation without penalty up to 60 days before departure on most flights
- **assistance** in the event of schedule changes or delays





Berlin



Golden Lane, Prague



Zwinger Palace, Dresden

## AHI Travel Expertise



From your reservation to your return home, we are here to ensure you have the adventure of a lifetime.

### *Before you go:*

**Travel Consultants** stand ready to answer your questions as they guide you through the reservation process.

**Your Travel Coordinator** is on hand to assist with flights, electives and special requests.

**Travel Information** provides pre-departure details and enrichment about your destination.

### *Once you arrive:*

**Your Travel Director**, a seasoned, multilingual professional, manages daily logistics so you enjoy a seamless experience.

**Handpicked Expert Guides** offer fascinating insights and share their passion for their country with you.

**Knowledgeable Lecturers** deepen your appreciation for the region and its history, culture and current events.



Astronomical Clock, Prague

# UCLA Alumni

UCLA Alumni Association  
James West Alumni Center  
325 Westwood Plaza  
Los Angeles, CA 90095-1397

CENTEUR24 2

**310-206-0613**  
**[alumni.ucla.edu/travel](http://alumni.ucla.edu/travel)**



## Deluxe trip to the cities of Berlin, Dresden and Prague!

AHI Travel's mission is to deliver inspirational, educational and cultural programs that delight travelers.

**With AHI you can rely on:**

- Experienced Travel Directors who attend to every detail of your journey.
- An exceptional travel value.
- Unique access to local sites.
- Flexibility and customization.
- Safety and security.



**Please call or refer  
to our website for the  
most current  
program information,  
discounts and pricing.**

Presorted Standard  
U.S. Postage  
PAID  
Mercury Mailing  
Systems, Inc.