

# Coastal Gems *of the* Emerald Isle

WILD ATLANTIC WAY



SPONSORED BY

UMass Boston Alumni Association



Alumni Association

June 22 – July 4, 2025  
Other dates available upon request

## Dear Alumni and Friends,

Ireland's dazzling coastal beauty takes center stage on this enriching, 11-night journey featuring less explored County Donegal and Northern Ireland! Join us as we explore along the Wild Atlantic Way, from the breathtaking Cliffs of Moher and the Burren's fossil-laden terrain to the windswept grandeur of Inishmore and Achill Islands. In gorgeous County Donegal, be awed by the vistas from Slieve League, Ireland's highest sea cliffs, and taste delectable food on a culinary tour. From there, journey into Northern Ireland, where you'll admire the walled city of Derry-Londonderry and Giant's Causeway, an eye-catching natural wonder. This well-rounded experience also includes traditional storytelling, music and dancing, plus a sheepherding demonstration on a family farm!

Along the way, expert guides and lecturers will share insights and historical context to help you fully appreciate your excursions. You'll also enjoy the ease and camaraderie of traveling with a small group with ample opportunities to explore on your own. Ensure that you're a part of this grand Irish adventure by reserving today!

Sincerely,



Kathleen Carten '79

President, Alumni Association Board of Directors

UMass Boston Alumni Association

---

### UNESCO Global Geopark

- Burren & Cliffs of Moher Global Geopark

### UNESCO World Heritage

- Giant's Causeway and Causeway Coast



*Flora among the limestone, Burren*







# A World of Discovery



The Emerald Isle's spectacular beauty awaits you on this heartwarming, culture-filled journey that includes less explored County Donegal and Northern Ireland! Feast your eyes on the majestic Wild Atlantic Way and discover the ruggedly beautiful islands of Inishmore and Achill. Stand atop Ireland's highest sea cliffs, gaze across Connemara's glacier-carved landscapes and wonder at Giant's Causeway. Along the way, savor the warm, welcoming ambience of cozy towns and lively cities!

Top: Poul nabrone, The Burren | Above: Glen Keen Farm  
Cover: Cliffs of Moher  
Mail panel: Inishmore | Westport

## Inspiring Moments



- Witness the Wild Atlantic Way's sensational beauty at **The Burren & Cliffs of Moher**, a UNESCO Global Geopark.
- Take in the towering **Slieve League** sea cliffs and the otherworldly stones of **Giant's Causeway**, a UNESCO World Heritage site.
- Tap your toes to a rousing **Irish music and dance performance**.
- Taste the best of contemporary and classic Irish cuisine on a **Donegal food tour**.
- Explore Northern Ireland's walled city of **Derry-Londonderry**.
- Visit **Kylemore Abbey** and **Glenveagh Castle**, two grand, 19th-century castles.
- Watch in delight as **talented dogs herd sheep** at a family farm in Connemara.



### Day 1 | In Transit

Depart your gateway city for Shannon, Republic of Ireland. 🌐

### Day 2 | Shannon, Republic of Ireland | Ennis

Arrive in Shannon and transfer 🚗 to the Old Ground Hotel in Ennis.

**Ennis Walking Tour.** Enjoy a stroll through this bustling, 11th-century market town.

Tonight, gather for a Welcome Reception and Dinner featuring delightful music and dancing.

### Day 3 | The Burren | Cliffs of Moher

**Enrichment: Irish Seanchaí.** Eddie Lenihan, a premier folklorist/seanchaí, tells traditional tales of folk heroes, mythology and the supernatural.

**The Burren & the Cliffs of Moher.** Revel in these natural wonders on the Wild Atlantic Way's dramatic coastline of cliffs, sea caves and inlets. Start with an exclusive guided walk across the Burren as expert Tony Kirby shares fascinating insights about this striking, karstic limestone plateau. After a pub lunch, see the iconic portal tomb, Poul nabrone, built between 2500–2000 B.C. Next, soak up awe-inspiring, panoramic views at the Cliffs of Moher.

### Day 4 | Aran Islands

**Aran Island of Inishmore.** Ferry across Galway Bay to the largest of the Aran Islands. As you travel on a minibus, your local guide will share entertaining stories about life on this stark, arresting island, where Gaelic is the first language. See cliffside Dun Aengus, the most famous of the Aran Islands' Bronze Age forts, and pause for lunch before your return ferry.



Top: Kylemore Abbey | Above: Musician

### Day 5 | Galway | Westport

Check out of the hotel and depart for Westport.

**Galway.** Feel the exuberant atmosphere along Galway's medieval lanes that buzz with street musicians and students. Walk with your guide to see Galway Cathedral and other landmarks, and then find a nice spot for lunch on your own. Check in to the Westport Plaza Hotel.

**Westport Walking Tour.** Stroll past elegant Georgian architecture in this lovely town.

### Day 6 | Achill Island

**Enrichment: A Vision of Ireland.** An artist and art historian shares how Ireland's character and culture are depicted within renowned works.

**Achill Island.** Admire the untamed splendor of Achill's rocky headlands and sheltered beaches on a coastal drive and see the Deserted Village of Slievemore dotted with the ruins of more than 80 abandoned stone cottages. After lunch on Achill, learn how to make a true Irish coffee.

### Day 7 | Connemara

**Connemara.** Journey through this brooding terrain of craggy mountains and windswept





Donegal

bogs. Stand before Croagh Patrick, regarded as Ireland's holiest mountain, where St. Patrick is said to have fasted for 40 days in A.D. 441, and visit the National Famine Memorial. Next, take a guided tour of romantic Kylemore Abbey, a 19th-century castle.

**AHI Connects | Glen Keen Farm.** Watch border collies expertly maneuver a flock and learn more about the dogs and sheep farming.

#### Day 8 | County Sligo | Donegal | Slieve League | Rathmullan

**County Sligo.** Appreciate the stirring scenery that deeply inspired the preeminent Irish poet William Butler Yeats, and visit his grave in Drumcliffe near the Benbulbin rock formation.

**Free Time:** Enjoy lunch and time on your own in the small town of Donegal.

**Slieve League.** Breathtaking views of Donegal Bay are in store on a guided walk along the top of Europe's highest accessible sea cliffs. Check in to the Rathmullan House.

Slieve League



#### Day 9 | County Donegal

**Free Time:** Relish the morning at leisure.

**Donegal Food Tour.** Sample the very best of County Donegal's innovative food scene driven by up-and-coming chefs as you wind your way through charming towns and villages.

#### Day 10 | Glenveagh National Park

**Glebe House & Gallery.** Visit a famed artist's former home filled with eclectic artwork.

**Glenveagh National Park.** Tour Glenveagh Castle nestled amid the pristine beauty of this remote park. Meander in the stunning gardens before savoring lunch at a nearby hotel.

**Leo's Tavern.** Relax at this pub owned by present and former members of the band Clannad, including Enya and Moya Brennan.

Derry-Londonderry





Day 11 | **Derry-Londonderry, Northern Ireland | Giant's Causeway | Glaslough, Republic of Ireland**

After breakfast, check out of the hotel.

**Derry-Londonderry & Giant's Causeway.** Take in this dynamic city's top sites, including its impressive, 17th-century walls, on a guided walk and delve into its turbulent history. After lunch in town, continue to Giant's Causeway. Marvel at the remarkable and unusual basalt columns created by the giant Finn McCool or an ancient volcanic eruption.

Check in to The Lodge at Castle Leslie Estate, set in the scenic countryside near Glaslough.

Day 12 | **Glaslough**

**Free Time:** Explore the estate's expansive grounds filled with sparkling lakes and ancient woods, or choose from optional activities such as spa treatments, fishing and archery. Celebrate your Irish adventure with your fellow travelers at a Farewell Reception and Dinner.

Day 13 | **In Transit**

After breakfast, transfer ➡ to the Dublin airport for the return flight ✈ to your gateway city.

Note: Itinerary may change due to local conditions.  
✈ Flights and ➡ transfers included for AHI FlexAir participants.

**Note About Activity Levels**

We have designated activity levels for all excursions on this program. For more details, please call or visit our website.

**Excursions on this itinerary require:**

- walking on cobblestones, unpaved paths and/or uneven surfaces
- getting on/off motor coaches and boats

Included Features

**Accommodations** {with baggage handling}

- **3 nights** in Ennis, County Clare, at the first-class Old Ground Hotel.
- **3 nights** in Westport, County Mayo, at the first-class Westport Plaza Hotel.
- **3 nights** in Rathmullan, County Donegal, at the first-class Rathmullan House.
- **2 nights** in Glaslough, County Monaghan, at The Lodge at Castle Leslie Estate, a first-class property.



**Transfers** {with baggage handling}

- Deluxe motor coach transfers during the Land program.

**Extensive Meal Program**

- 11 breakfasts, 6 lunches and 6 dinners, including Welcome and Farewell Dinners; tea or coffee with all meals, plus wine with dinner.

**Your One-of-a-Kind Journey**

- **Small group:** Sized just right at 28 guests.
- **Enrichment by expert speakers** enhances your insight into the region.
- **Engaging excursions** showcase the local culture, heritage and history.
-  **AHI Connects | Local immersion.**
- Welcome and Farewell Receptions to mingle with fellow travelers.
- A personal VOX headset to hear your English-speaking guide clearly.
- Tipping of guides and drivers.
- Complimentary travel mementos.
-  **AHI Sustainability Promise:**  
We strive to make a positive impact wherever we travel.

Giant's Causeway





## Accommodations

Our travel experts have carefully selected these first-class properties ideally situated near celebrated Irish landmarks. Their prime locations also make it easy for you to immerse yourself in local life. Of utmost importance is the superior quality of their services, amenities and accommodations, allowing you to enjoy your stay fully.



**Old Ground Hotel | Ennis**



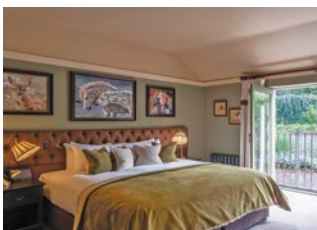
**Westport Plaza Hotel | Westport**



**Rathmullan House | Rathmullan**



**The Lodge at Castle Leslie Estate | Glaslough**



# Reserve your trip today!

To book your journey,  
please call our AHI Travel Experts  
at **800-323-7373** or  
visit **umb.ahitravel.com**.

## Program Dates

### Travel dates ✈

**June 22 – July 4, 2025**

✈ Travel dates include any overnights required for international travel. These dates may vary depending on air schedules.

### Tour dates\*

**June 23 – July 4, 2025**

\* Tour dates begin on the scheduled arrival date at your destination and end on the scheduled departure date from your destination.

## Land Program

Full Price	\$6,140
------------	---------

Special Savings	\$750
-----------------	-------

<b>Early Booking Special Price*</b>	<b>\$5,390</b>
-------------------------------------	----------------

\*Early Booking Special Price valid if booked by date on address panel and paid in full at booking. If you pay only your deposit by early booking date, you still save \$250 per person.

VAT in the amount of \$395 per person is included in the above prices. All prices quoted are in USD, per person, based on double occupancy and do not include air transportation costs (unless otherwise stated).

Special offers, promotions and discounts cannot be combined.

Single accommodations are an additional \$995 (limited availability).

**Please note:** Program-specific terms and conditions are available at <https://umb.ahitravel.com/destinations/1902A?schoold=84>. You can also request a copy from our travel experts. Any payment to AHI Travel constitutes your acceptance of the terms and conditions set out therein, including but not limited to the cancellation terms.

## AHI FlexAir

### Let us arrange your flights

**Our experts are ready to assist you in booking flights. Our personalized air program offers the following advantages:**

- **price guarantee** to protect you from fuel surcharge increases after ticket purchase
- arrival and departure **transfers** on group dates
- **flexibility** to change or cancel your reservation before departure on most flights (Fees may apply.)
- **assistance** in the event of schedule changes or delays





*Glenveagh Castle, Glenveagh National Park*



*County Sligo*



*Dun Aengus, Inishmore*

## *AHI Travel Expertise*



From your reservation to your return home, we are here to ensure you have the adventure of a lifetime.

### *Before you go:*

**Travel Consultants** stand ready to answer your questions as they guide you through the reservation process.

**Travel & Air Coordinators** each offer their personalized assistance with flights, electives and special requests.

**Travel Information** provides pre-departure details and enrichment about your destination.

### *Once you arrive:*

**Your Travel Director**, a seasoned, multilingual professional, manages daily logistics so you enjoy a seamless experience.

**Handpicked Expert Guides** offer fascinating insights and share their passion for their country with you.

**Knowledgeable Lecturers** deepen your appreciation for the region and its history, culture and current events.



*Derry-Londonderry*



Alumni Association

University of Massachusetts Boston  
Alumni Association  
240 Morrissey Boulevard, Box 41P  
Boston, MA 02125

IRENO25 304

**800-323-7373**

**[umb.ahitravel.com](http://umb.ahitravel.com)**



**Dazzling scenery, vibrant culture and classic cuisine!**

**AHI Travel's** mission is to deliver inspirational, educational and cultural programs that delight travelers.

**With AHI you can rely on:**

- Experienced Travel Directors who attend to every detail of your journey.
- An exceptional travel value.
- Unique access to local sites.
- Flexibility and customization.
- Safety and security.



**Please call or refer to  
our website for the  
most current program  
information, discounts  
and pricing.**

Presorted Std.  
U.S. Postage  
Paid  
AHI Travel