



Alaskan

Heritage & Wildlife



JOHNS HOPKINS
UNIVERSITY

August 4-11, 2024

Dear Johns Hopkins Alumni and Friends,

Nourish your soul on an extraordinary, seven-night journey to breathtaking Alaska! Enjoy stays in Anchorage and Denali National Park, nestled in the shadow of North America's tallest mountain. Each day offers new adventures, from exploring vast, unspoiled wilderness to visiting towns steeped in pioneering history.

In vibrant Anchorage, learn about the state's native culture and indigenous peoples. Venture through ruggedly beautiful landscapes to visit Talkeetna and the Mat-Su Valley. Discover a wealth of wildlife in Denali National Park, and search for glaciers and darling puffins while cruising Prince William Sound. Plus, soak up stunning vistas during a memorable journey on the Alaska Railroad. Along the way, locals and experts share their knowledge of Alaska's history, natural wonders, legendary Iditarod and more. Take home memories of snow-draped mountains, endless blue skies and unforgettable wildlife.

This exceptional program has been thoughtfully designed with educational enrichment from expert guides and lecturers. It also offers you the security, ease and value of group travel with plentiful opportunities for independent exploration. You'll appreciate the camaraderie with other curious travelers and make your own discoveries during free time. Space on this exclusive journey is limited, so make your reservations today!

Sincerely,



Marguerite I. Jones, A&S '74, Bus '88
Travel Program Director, Office of Alumni Relations
The Johns Hopkins University

Note: A small portion of the cost of your trip supports the Johns Hopkins Alumni Travel Program.

Eligibility: At least one member of the traveling party is required to make a sustaining financial contribution of \$50 or more to the Johns Hopkins Alumni Association within the fiscal year. Please visit alumni.jhu.edu/support.



Dall sheep, Denali National Park



A World of Discovery



Alaska offers epic adventure and discovery! Our specially planned excursions reveal Alaska's storied history and culture within its world-class museums, friendly communities and vast landscapes. Search for majestic animals, including moose, bear and sheep, in beautiful national parks. Visit a working kennel and a reindeer farm, and enjoy a spectacular train journey and a cruise on Prince William Sound. Along the way, experts share insights about Alaska's heritage and wonders.

*Top: Mount McKinley | Above: Native Alaskan dancers
Cover: Bull moose, Denali National Park
Mail panel: Traditional totem pole art | Breaching whale*

Inspiring Moments



- Embrace **Alaska's wide-open spaces and outdoor adventures.**
- Thrill to an adventure in **Denali National Park**, home to magnificent natural beauty and abundant wildlife.
- Uncover the highlights of **Anchorage**, including the Anchorage Museum.
- Visit **Talkeetna**, a welcoming community of artists, musicians and craftspeople.
- Tour a working kennel, where you'll meet puppies and learn about the world-famous **Iditarod Trail Sled Dog Race.**
- Witness spectacular coastal scenery, calving glaciers and marine animals while cruising the **Prince William Sound.**
- Revel in dramatic vistas from your glass-domed car during an unforgettable **luxury train ride.**
- **Meet locals** who are eager to share their experiences and knowledge about dog mushing and more!



Anchorage

Day 1 | In Transit | Anchorage, Alaska

Depart for Anchorage, Alaska. Upon arrival, transfer to the Hilton Anchorage.

Day 2 | Anchorage

Enrichment: America's Last Frontier. Join an expert who discusses Alaska's geography and history, from the first Russian settlement on Kodiak Island to the Klondike Gold Rush.

Highlights of Anchorage. This tour of Anchorage's historic downtown showcases the city's harmonious blend of modern and rugged wild. At the Anchorage Museum, gain insight into 10,000 years of history during a guided tour. From the challenges of living in this untamed landscape to Alaska's earliest explorers, be immersed in compelling history!

Free Time: Set out to explore Anchorage on your own. Walk or rent a bike to experience the Tony Knowles Coastal Trail, or sip a craft beer at a local brewery.

Later tonight, gather with new friends for a Welcome Dinner.

Day 3 | Anchorage | Talkeetna | Denali

Charming Talkeetna. At the confluence of the Susitna, Talkeetna and Chulitna rivers sits quaint Talkeetna. Originally a riverboat steamer station that supplied goods to the area's mining districts, the Talkeetna of today is a hip, welcoming community where streets are lined with log cabins, lively eateries, art galleries, breweries and colorful, clapboard storefronts. You may choose to visit the Mountaineering Ranger Station for insight into the feat of climbing Mount McKinley or the Talkeetna Historical Society Museum to learn about climbers that have scaled the area's peaks.

Continue to Denali National Park. Upon arrival, check in to Denali Bluff's Hotel and start your exploration of this stunning region. You can begin with optional tours such as hiking excursions, flightseeing, river rafting, golf, biking and much more!

Day 4 | Denali National Park

Denali National Park. Embark on a thrilling adventure tour that reveals Alaska's famous national park. Your Tundra Wilderness Tour, fully narrated by a certified naturalist, takes you deep into this landscape that is home to bears, moose, wolves, caribou and Dall sheep. Travel in comfort as you search for animals roaming freely in natural habitats. Along the way, learn about the park's history and marvel at up-close views of Mount McKinley.

Enrichment: Geography & History of Denali National Park. Join a resident mountain climber and naturalist who will enlighten you with the history and unique geography of this storied, magical region.

Grizzly bear and cubs






Glacier, Prince William Sound

Sit down to a delicious dinner at your hotel. Dig into flavorful cuisine, complemented by friendly service and excellent views.

Day 5 | Denali | Anchorage

 **AHI Connects | Dog Mushing.** Delve into this historic and culturally significant sport while visiting a working kennel. Learn about the Iditarod Dog Sled Race and how teams prepare to take on the trails. You'll also meet puppies and learn about the care and training regime of these furry "athletes."

Continue to the Denali Depot to board a train for a deluxe rail journey back to Anchorage.

Scenic Train Journey. Relax in luxury as you ride the rails between Denali and Anchorage. Your glass-domed car lets you indulge in Alaska's scenic grandeur. Learn about the awe-inspiring sights, flora and fauna from expert commentary along the way. Lunch is provided during your journey.

Arrive in Anchorage and check in to your hotel.

Rail journey



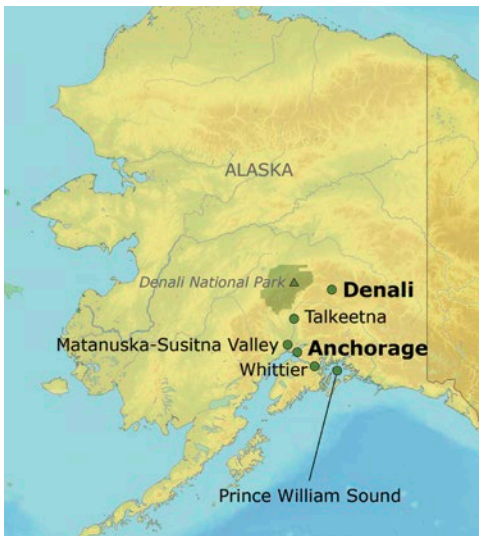
Day 6 | Anchorage | Whittier

Whittier & Prince William Sound. Travel along the Seward Highway to the coastal community of Whittier. En route, visit the nonprofit Alaska Wildlife Conservation Center. This wonderful sanctuary takes in orphaned and injured animals and gives them a safe home. Continue to Whittier and board a marine vessel for a cruise of the wildlife-rich Prince William Sound, a portrait of icebergs and scenic shores. Keep watch for whales, sea otters and seals as well as seabirds, eagles and Great Gray Owls.

Dinner is at your leisure tonight. Experience the city's food scene by dining on fresh oysters, cod, halibut and more.

Bald eagle, Prince William Sound





Accommodations (with baggage handling)

- **2 nights** in Anchorage, Alaska, at the first-class Hilton Anchorage.
- **2 nights** in Denali at the first-class Denali Bluffs Hotel, a national park hotel.
- **3 nights** in Anchorage at the first-class Hilton Anchorage.

Transfers (with baggage handling)

- Deluxe motor coach transfers during the Land Program.

Extensive Meal Program

- 7 breakfasts, 4 lunches and 3 dinners, including Welcome and Farewell Dinners; tea or coffee with all meals, plus wine with dinner.

Your One-of-a-Kind Journey

- **Small group:** Sized just right at 28 guests.
- **AHI Travel Assurance plan** covers Accident and Sickness Medical Expense, Trip Delay and Emergency Evacuation for U.S. residents.
- **Enrichment by expert speakers** enhances your insight into the region.
- **Engaging excursions** showcase the local culture, heritage and history.
- **AHI Sustainability Promise:** We strive to make a positive impact wherever we travel.
- **AHI Connects | Local immersion.**
- A personal VOX headset to hear your English-speaking guide clearly.
- Tipping of guides and drivers.
- Complimentary travel mementos.

Day 7 | Matanuska-Susitna Valley | Anchorage

Alaska Native Heritage Center. Encounter compelling history at this celebrated heritage center, which commemorates the dynamic culture of Alaska’s indigenous peoples through stories, native dwellings and dancing.

AHI Connects | Alaskan Native Lecture. Enjoy a special opportunity to engage in an educational exchange with an Alaskan Native.

“Mat-Su” Valley. Journey through the Matanuska-Susitna Valley and visit the Palmer Visitor Center. The center offers background into the development of the region, the 1935 Matanuska Colony Project and other intriguing facts. Next, visit a reindeer farm and interact with these gentle animals, followed by a visit to a local farm for lunch.

Gather for a Farewell Dinner tonight and raise a toast to your grand Alaskan adventure.

Day 8 | In Transit

After breakfast, transfer to the airport for the return flight to your gateway city.

Note: Itinerary may change due to local conditions.

Flights and transfers included for AHI FlexAir participants.

Note About Activity Levels

We have designated activity levels for all excursions on this program. For more details, please call or visit our website.

Excursions on this itinerary require:

- walking on cobblestones, unpaved paths and/or uneven surfaces
- getting on/off motor coaches and boats

Native Alaskan wearing a chilkat blanket

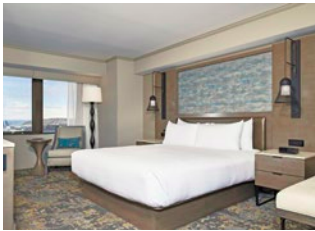


Accommodations

Our travel experts have carefully selected these first-class properties for their prime locations. They are ideally located for discovering Alaska's celebrated sites and natural beauty, while providing opportunities to immerse yourself in local life. Of utmost importance is the superior quality of the services, amenities and accommodations, allowing you to enjoy your stay fully.



Hilton Anchorage | Anchorage



Denali Bluffs Hotel | Denali



Reserve your trip today!

To book your journey,
please call our AHI Travel Experts
at **AHI: 800-323-7373** or
visit **alumni.jhu.edu/alumnijourneys**.

Program Dates

Travel dates †

August 4-11, 2024

† Travel dates include any overnights required for international travel. These dates may vary depending on air schedules.

Tour dates*

August 4-11, 2024

* Tour dates begin on the scheduled arrival date at your destination and end on the scheduled departure date from your destination.

Land Program

Full Price	\$5,445
-------------------	----------------

Special Savings	\$250
------------------------	--------------

Special Price*	\$5,195
-----------------------	----------------

*Special Price valid if booked by the date found on the address panel.
VAT is an additional <TAX> per person.

All prices quoted are in USD, per person, based on double occupancy and do not include air transportation costs (unless otherwise stated).
Special offers, promotions and discounts cannot be combined.

Single accommodations are an additional \$1,075 (limited availability).

Please note: Program-specific terms and conditions are available at <https://jhu.ahitravel.com/destinations/1792A?schoold=72>. You can also request a copy from our travel experts. Any payment to AHI Travel constitutes your acceptance of the terms and conditions set out therein, including but not limited to the cancellation terms.

AHI FlexAir

Let us arrange your flights

Our experts are ready to assist you in booking flights. Our personalized air program offers the following advantages:

- **price guarantee** to protect you from fuel surcharge increases after ticket purchase
- arrival and departure **transfers** on group dates
- **flexibility** to change or cancel your reservation without penalty up to 60 days before departure on most flights
- **assistance** in the event of schedule changes or delays



Sea otters, Prince William Sound



Husky puppies



Anchorage

AHI Travel Expertise



From your reservation to your return home, we are here to ensure you have the adventure of a lifetime.

Before you go:

Travel Consultants stand ready to answer your questions as they guide you through the reservation process.

Your Passenger Service Representative is on hand to assist with flights, electives and special requests.

Travel Information provides pre-departure details and enrichment about your destination.

Once you arrive:

Your Travel Director, a seasoned, multilingual professional, manages daily logistics so you enjoy a seamless experience.

Handpicked Expert Guides offer fascinating insights and share their passion for their country with you.

Knowledgeable Lecturers deepen your appreciation for the region and its history, culture and current events.



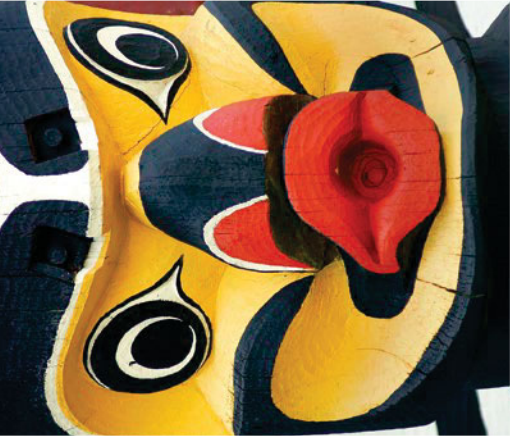
Reindeer farm



Development and Alumni Relations
3400 N. Charles St.
Baltimore, MD 21218

ALASKA24 102

AHI: 800-323-7373
alumni.jhu.edu/alumnijourneys



Discover Alaska's unrivaled landscapes, wildlife and more!

AHI Travel's mission is to deliver inspirational, educational and cultural programs that delight travelers.

With AHI you can rely on:

- Experienced Travel Directors who attend to every detail of your journey.
- An exceptional travel value.
- Unique access to local sites.
- Flexibility and customization.
- Safety and security.



**Please call or refer
to our website for
the most current
program information,
discounts and pricing.**

Presorted Std.
U.S. Postage
Paid
AHI Travel