

# New Zealand

LAND *of the* LONG WHITE CLOUD

SPONSORED BY



**ALUMNI**

University of Illinois Alumni Association  
March 27 – April 12, 2027

# I ALUMNI

Dear **EXPLORERS** and Friends,

If you've always dreamed of journeying to New Zealand someday, now is the moment to make it happen! Join us for this incredible, 14-night adventure featuring the best of New Zealand across the North and South Islands. The star attraction, of course, will be its enchanting natural beauty, and our travel experts have carefully curated excursions that showcase it. You'll cruise through splendid Doubtful Sound in dazzling Fiordland National Park, take in an impressive glacier and search for whales in the waters off Kaikoura. Look forward to more gorgeous scenery on a train ride through the Southern Alps and a stay in the vineyard-lined valleys of the Marlborough wine region!

In addition, you'll experience the exciting buzz of urban life while exploring in Auckland, Wellington, Christchurch and Queenstown, and broaden your understanding of New Zealand's remarkable Māori culture on unique tours led by members of local Iwi, or tribes. This well-balanced program also features illuminating lectures, first-class hotels and a professional Travel Director who manages all the on-site details.

With so many terrific features and a limit of only 28 travelers, this popular program will fill quickly, so guarantee your spot by booking today!

Sincerely,



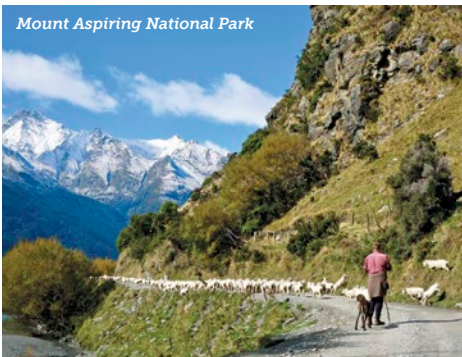
David Bambrey  
President

The EXPLORERS program is open to alumni of the University of Illinois, their families, and friends.

## UNESCO World Heritage

Te Wahipounamu,  
South West New Zealand

Mount Aspiring National Park



Blue Pools





# Discovery begins here



Be captivated by New Zealand's extraordinary beauty and the warm hospitality of Kiwis, as New Zealanders are affectionately known, on this exhilarating, 14-night journey! Bask in soul-stirring panoramas in the great outdoors; the values, traditions and legends of the Māori people; and the dynamism of New Zealand's great cities and towns. It's a marvelous cultural immersion in this stunning island nation that will reward you with indelible memories!



Top: Kaikoura coast | Above: Māori carving  
Cover: Doubtful Sound | Mail panel: Māori woman | Marlborough wine region  
Right: Kiwi, Zealandia Wildlife Sanctuary

## Inspiring Moments



- Cruise through **brehtaking Doubtful Sound** in Fiordland National Park.
- Enjoy a hike to admire the blue-tinted **Franz Josef Glacier**.
- Take in the majestic Southern Alps from the famous **TranzAlpine train**.
- Delve into **Māori legends and treasures** on fascinating cultural walking tours.
- Taste fine wines grown in New Zealand's acclaimed **Marlborough wine region**.
- Savor sweeping vistas of **Queenstown** aboard an aerial gondola.
- Appreciate lovely **Thunder Creek Falls** and the crystal-clear **Blue Pools**.
- Soak up **Cook Strait's picture-perfect scenery** on a celebrated ferry ride.
- Relish up-close encounters with **local wildlife** like adorable kiwi birds.
- Experience beautiful Te Wahipounamu, a **UNESCO World Heritage site**.



### Days 1 & 2 | In Transit

Depart your gateway city for Auckland, New Zealand. 🌐 Cross the international date line.

### Day 3 | Auckland, New Zealand

Upon arrival, transfer 🔄 to the Grand Millennium Auckland, and join your group later for lunch.

**Auckland.** Stroll with your guide in the vibrant downtown area and learn about Kiwi customs, the city's Māori heritage and the European colonization of New Zealand.

**Enrichment: Legend of Tamaki Makaurau.** Meet for a Welcome Reception and Dinner.

### Day 4 | Auckland

**Auckland Museum: Curator's Tour.** Gain insights about New Zealand's natural history and view exquisite Māori taonga, or treasures. Enjoy lunch in the charming suburb of Parnell.

**Free Time:** The rest of the day is yours to plan.

### Day 5 | Auckland | Wellington

Transfer to Auckland's domestic airport and fly to Wellington with lunch upon arrival. Check in to the James Cook Hotel Grand Chancellor and unwind this afternoon during leisure time.

**Zealandia Wildlife Sanctuary.** Follow your guide at dusk through this urban conservation area in search of rare and endangered native wildlife like the spotted Kiwi, the national bird.

### Day 6 | Wellington

**Wellington Highlights.** See the capital city's top sites, including the Parliament buildings, on a scenic/walking tour, and visit Old St. Paul's Church, a Gothic Revival wooden church.

🌐 **AHI Connects | Hidden Māori Treasures Walking Tour.** Local tribal members reveal the Māori heritage along Wellington's waterfront. Hear legends and view archaeological remains. Dine tonight with your group at a restaurant.

### Day 7 | Wellington | Ferry to South Island | Picton | Blenheim

Check out and ferry to the South Island through picturesque Cook's Strait and Queen Charlotte Sound. Arrive in Picton and head to Blenheim.

**Marlborough Wine Region.** New Zealand's largest winegrowing region first grabbed the world's attention in the 1980s with its aromatic Sauvignon Blanc. Try some of its exceptional varietals and savor lunch at a winery.

Check in to the Carnmore Chateau Marlborough in Blenheim.

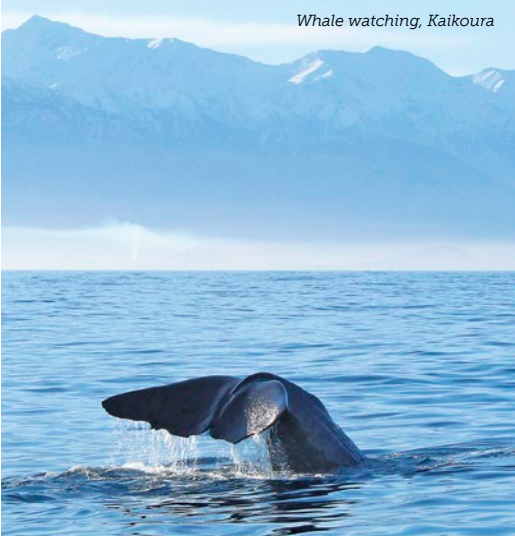
### Day 8 | Blenheim

**Free Time:** Make your own plans today or join one of the two optional activities.

Waterfront, Auckland



Whale watching, Kaikoura



Cruising Doubtful Sound



**🗺️ Elective | Guided Wine Tour by Bike.** Pedal through Marlborough’s pastoral scenery on a leisurely ride to local wineries. *(Active)*

**🗺️ Elective | Omasaka Aviation Heritage Museum.** Study vintage World War I and II aircraft in dramatic, detailed dioramas.

### Day 9 | Kaikoura | Christchurch

---

Check out today and travel to Kaikoura.

**Whale Watching Cruise.** Look out for the amazing marine mammals that live in the waters near Kaikoura, including giant sperm whales, orcas, fur seals and dusky dolphins! Afterward, travel to Christchurch and check in to the Distinction Christchurch Hotel.

### Day 10 | Christchurch

---

**Christchurch Tour & Botanic Gardens.** Get to know the South Island’s largest city on a scenic tour and stroll through the leafy Botanic Gardens, founded in 1863.

**🌍 AHI Connects | Walking Māori Cultural Tour.** Delve into ancestral creation stories, important traditions and local treasures in Ōtautahi, the Māori name for Christchurch.

**Free Time:** Explore more on your own.

### Day 11 | TranzAlpine Train | Arthur’s Pass | Hokitika | Franz Josef

---

After breakfast, check out and transfer to the Christchurch Railway Station.

**TranzAlpine Train Ride.** Glide across the Canterbury Plains and through gorges and valleys in the heart of the Southern Alps on this wonderful rail experience that ends within the mountains of Arthur’s Pass National Park. Drive to Hokitika. After lunch on your own, continue to Franz Josef Glacier and check in to the Scenic Hotel Franz Josef Glacier.

### Day 12 | Franz Josef Glacier

---

**Franz Josef Glacier.** Delight in the unspoiled grandeur that surrounds you on a walk to the glacier lookout point. Your guide will share details about the glacier’s geological features, the rain forest, and native plants and wildlife.

### Day 13 | Queenstown

---

Check out today and depart for Queenstown.

**Scenic Transfer to Queenstown.** Take in spectacular landscapes of steep mountains, lush forests and secluded lakes, and stop to see Thunder Creek Falls and the Blue Pools. Check in to the Millennium Hotel Queenstown.

TranzAlpine Train





## Included Features



### Accommodations (with baggage handling)

- **2 nights** in Auckland, New Zealand, at the first-class Grand Millennium Auckland.
- **2 nights** in Wellington at the first-class James Cook Hotel Grand Chancellor.
- **2 nights** in Blenheim at the first-class Carnmore Chateau Marlborough.
- **2 nights** in Christchurch at the first-class Distinction Christchurch Hotel.
- **2 nights** in Franz Josef at the first-class Scenic Hotel Franz Josef Glacier.
- **4 nights** in Queenstown at the first-class Millennium Hotel Queenstown.

### Transfers (with baggage handling)

- All transfers in the Land Program: flight, ferry, train and deluxe motor coaches.

### Extensive Meal Program

- 14 breakfasts, 5 lunches and 7 dinners, including Welcome and Farewell Dinners; wine with dinner.

### Your One-of-a-Kind Journey

- **Small group:** Sized just right at 28 guests.
- **Enrichment by expert speakers** enhances your insight into the region.
- **Engaging excursions** showcase the local culture, heritage and history.
- **Electives** and free time to pursue your individual interests.
- **AHI Connects:** Local immersion.
- Welcome and Farewell Receptions to mingle with fellow travelers.
- A personal VOX headset to hear your guide clearly.
- Tipping of guides and drivers.
- **AHI Sustainability Promise:** We strive to make a positive impact wherever we travel.

Christchurch



### Day 14 | Queenstown | Arrowtown

**Queenstown & Arrowtown.** Admire the landmarks of Queenstown, a mecca for adventure sports enthusiasts, on a scenic tour and explore Arrowtown, a former gold rush town. Later, ride a gondola up Bob's Peak for stellar views over Queenstown.

**Enrichment: Extreme Sports in New Zealand.**

### Day 15 | Doubtful Sound | Queenstown

**Doubtful Sound Tour.** A truly memorable day awaits in awe-inspiring Fiordland National Park! Cruise across Lake Manapouri framed by the Cathedral Mountains, see the dense rain forest, and journey through the striking stillness of the magnificent Doubtful Sound fiord on a three-hour catamaran cruise.

### Day 16 | Queenstown

**Free Time:** Craft your own agenda today! Gather for a Farewell Reception and Dinner.

### Day 17 | In Transit

After breakfast, transfer to the airport for the return flight to your gateway city.

Note: Itinerary may change due to local conditions.

✈ Flights and 🚗 transfers included for AHI FlexAir participants.

🎡 Elective experiences available at an additional cost.

## Active Travel

This **Active Program** is designed for people who are in good health and can comfortably participate in a demanding daily schedule of physical activities. For more details, please call or visit our website.

### Excursions on this program require:

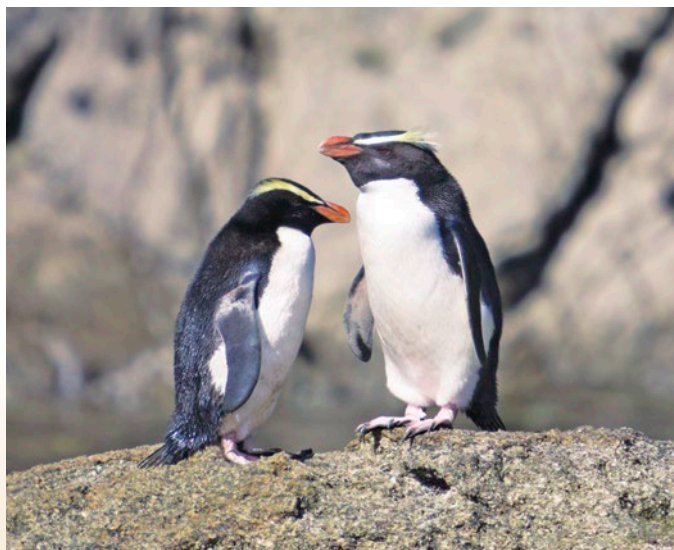
- walking on cobblestones, unpaved paths and/or uneven and slippery surfaces
- getting on/off motor coaches, boats and trains
- climbing in/out of excursion boats
- walking up steep inclines/declines and up and down stairs



*Gondola ride, Queenstown*



*Franz Josef Glacier*



*Fiordland crested penguin, Doubtful Sound*

# 2027 | Departure Details

## Program Dates

**Travel dates** † **March 27 – April 12, 2027**

† Travel dates include any overnights required for international travel. These dates may vary depending on air schedules.

**Tour dates\*** **March 29 – April 12, 2027**

\* Tour dates begin on the scheduled arrival date at your destination and end on the scheduled departure date from your destination.

## Land Program

**Full Price** **\$7,945**

**Special Savings** **\$750**

**Special Savings Price\*** **\$7,195**

**\*This Special Savings Price includes our \$250 Early Booking and \$500 Pay-in-Full discounts and is valid if you book by the date on the address panel and pay in full at booking.**

Deposit amount is \$1,000 per person.

Final Payment is due at least 150 days prior to departure.

Price includes applicable program taxes (such as VAT and port charges).

All prices quoted are in USD, per person, based on double occupancy and do not include air transportation costs (unless otherwise stated).

Special offers, promotions and discounts cannot be combined.

Single accommodations are an additional \$2,295 (limited availability).

**Please note:** Program-specific terms and conditions are available at <https://il.ahitravel.com/destinations/2049A?schoold=69>.

## AHI FlexAir

### Let us arrange your flights

Our experts are ready to assist you in booking flights. Our personalized air program offers the following advantages:

- **price guarantee** to protect you from fuel surcharge increases after ticket purchase
- arrival and departure **transfers** on group dates
- **flexibility** to change or cancel your reservation before departure on most flights (Fees may apply.)
- **assistance** in the event of schedule changes or delays

## AHI Travel Expertise

**Travel Consultants** guide you through the reservation process.

**Travel & Air Coordinators** offer assistance with flights, electives and special requests.

**Travel Information** provides pre-departure details and enrichment about your destination.

**Your Travel Director**, a seasoned, multilingual professional, manages daily logistics so you enjoy a seamless experience.

**Handpicked Expert Guides** and **Knowledgeable Lecturers** deepen your appreciation for the region and its history, culture and current events.



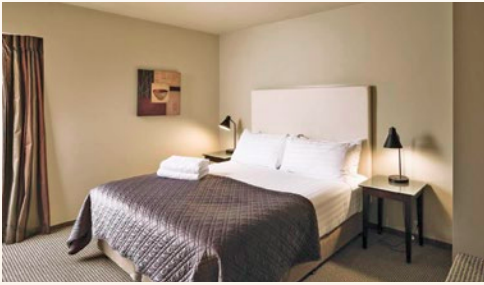
# Accommodations



**Grand Millennium Auckland** | Auckland  
○○○○○



**James Cook Hotel Grand Chancellor** | Wellington  
○○○○○



**Carnmore Chateau Marlborough** | Blenheim  
○○○○○



**Distinction Christchurch Hotel** | Christchurch  
○○○○○



**Scenic Hotel Franz Josef Glacier** | Franz Josef  
○○○○○



○○○○○



**Millennium Hotel Queenstown** | Queenstown  
○○○○○



○○○○○



Book your journey today!

844-414-0369

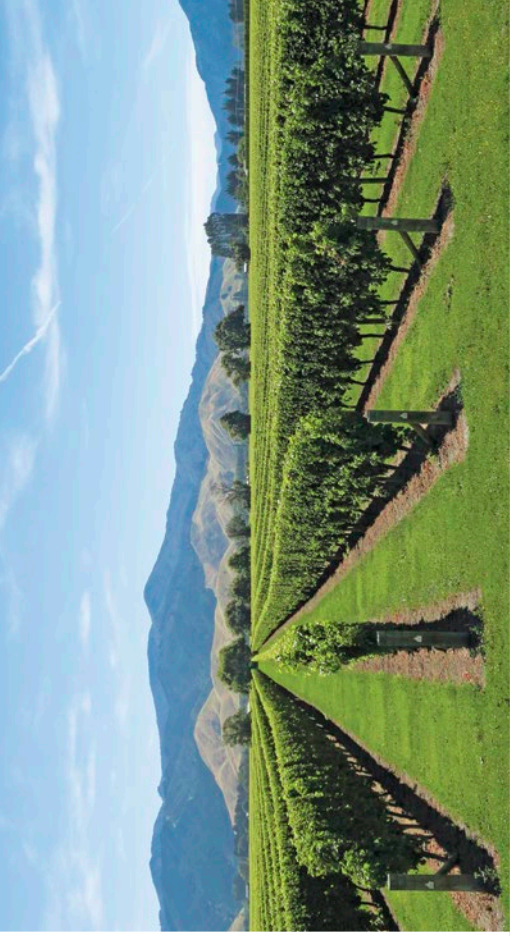
<https://uiaa.org/explorers/>

# I

## ALUMNI

University of Illinois  
Alumni Association  
EXPLORERS Office  
Alice Campbell Alumni Center  
601 S. Lincoln Avenue  
Urbana, IL 61801

NEWZEAL27 77



Revel in glorious natural splendor and rich Māori culture!

Please call or refer to  
our website for the  
most current program  
information, discounts  
and pricing.

Book your journey today!

**844-414-0369**

**<https://uiaa.org/explorers/>**

Presorted Std.  
U.S. Postage  
Paid  
AHI Travel