



Chilean Wonders

Lake District & Patagonia



SPONSORED BY



January 27 – February 7, 2025



Dear Alumnae and Friends,

Embark on an unforgettable, nine-night, small-group adventure in Chile! This South American jewel, more than 2,500 miles long but only roughly 110 miles wide, abounds with distinctive regions. Your first destination lies in central Chile, tucked in a valley between the Andes and the Pacific coastline. In Santiago, relish the capital's lively streets, tantalizing cuisine and architectural gems. Then, journey further south to the beautiful Lake District, where you'll explore atmospheric Chiloé Island and delight in lakeside views from your hotel room in Puerto Varas.

Your next jaunt southward brings you to the spectacular landscapes of Chilean Patagonia near the continent's tip. Get a close-up look at massive glaciers during a fjord cruise, be dazzled by the wild grandeur of Torres del Paine National Park and tour a historic port situated on the Strait of Magellan. Finally, cap off your adventure with one more day to enjoy Santiago.

With a seasoned Travel Director on hand to manage the details, you're free to focus on each day's exciting, new experiences. And along the way, informative lecturers and guides offer rich details to enhance your understanding. Plus, this well-rounded trip includes first-class hotels and all flights within Chile.

A journey as remarkable as this will fill up very fast! Guarantee your spot by reserving today.

In the spirit of Sisterhood,

Valerie L. Anderson

Valerie Anderson '81, MBA
Executive Director
Associate Alumnae of Douglass College
732-246-1600
www.douglassalumnae.org

UNESCO Biosphere Reserve

Torres del Paine National Park



Andean condor

Salto Grande waterfall, Torres del Paine National Park





A World of Discovery



On this adventure of a lifetime, connect with the wild nature and warm culture of Chile, where each region of this slender country reveals fascinating contrasts. Experience the energy of vibrant Santiago before venturing south to soak up the Lake District's exquisite scenery and peek at penguins in their natural habitat. Then, bask in the magnificence of Patagonia's fabled fjords and awe-inspiring glaciers near the end of the world!

Inspiring Moments



- Revel in the vitality of **cosmopolitan Santiago**, framed by snowcapped Andean peaks.
- Marvel at majestic, blue-hued glaciers in the pristine wilderness of **Chilean Patagonia**.
- Savor the splendor and tranquility of **Chile's Lake District**.
- Witness **Humboldt and Magellanic penguins** in their natural habitat.
- Navigate by boat through stunning **Lake Todos los Santos** and the **Ultima Esperanza Fjord**.
- Dig into sizzling specialties cooked over hot stones at a **Chilean curanto**.
- Be awed by the jaw-dropping grandeur of **Torres del Paine National Park**, a **UNESCO Biosphere Reserve**.

Top: Balmaceda Glacier | Above: Humboldt penguins, Chiloé Island

Cover: Guanacos, Patagonia | Mail panel: Chilean cowboy | Wild horses, Torres del Paine National Park



Plaza de Armas, Santiago

Day 1 | In Transit

Depart your gateway city for Santiago, Chile. 🌐

Day 2 | Santiago, Chile

Upon arrival, transfer 🚗 to the Hotel Cumbres Lastarria in Santiago's cultural center. This artsy district is anchored by famed institutions such as the Museum of Fine Arts and the GAM performing arts center. Join your Travel Director this afternoon for a short walk in the area.

Enrichment: Chilean History.

Meet and socialize with your fellow travelers at a Welcome Reception and Dinner this evening.

Day 3 | Santiago

Santiago. Experience this dynamic capital city on a panoramic tour with stops along the way. Admire the presidential seat, the Palacio de la Moneda, and pass by the Plaza de Armas, a central hub since 1541. Stop for a short walking tour of hip, bohemian Bellavista, buzzing with cafés, art galleries and known for its vibrant street art. Celebrated Nobel laureate poet Pablo Neruda once resided here. Continue to La Moneda Cultural Center to stop at a Chilean crafts store and then visit the Museo Chileno de Art Precolombino to see the "Chile before Chile" exhibition. After lunch at leisure, travel to a traditional Chilean winery for a tour and tasting.

Enrichment: Contemporary Chile.

Day 4 | Puerto Montt | Puerto Varas

Depart for Santiago's airport and fly to Puerto Montt. Once you arrive, head to a small fishing village for an authentic *curanto* lunch, cooked over hot stones. Then, transfer to Puerto Varas

and check in to the Enjoy Puerto Varas Hotel on Lake Llanquihue in the enchanting Lake District. Join your group for dinner in the hotel tonight.

Day 5 | Chiloé Island

Chiloé Island. Ferry to this picturesque island and stop in Chacao to stroll through its town square and see the charming church. Next, observe Humboldt and Magellanic penguins and other wildlife from a boat that takes you close to their natural habitats. Enjoy lunch after your cruise. Afterward, visit a museum in Ancud to learn about the island's wooden churches built by 17th-century Spanish Jesuit missionaries.

Day 6 | Petrohué River Falls | Puerto Varas

Petrohué River Falls. Breathtaking scenery is the star attraction today within Vicente Pérez Rosales National Park. Admire the rushing, turquoise waters of the falls and then navigate by boat through stunning Lake Todos los Santos surrounded by the impressive, snowcapped Osorno, Puntagudo and Tronador volcanoes.

Wooden church, Chacao, Chiloé Island







Osorno, Lake Todos los Santos

AHI Connects | Ensenada village.

Indulge in the tantalizing flavors of an *asado*, a traditional Patagonian barbecue, for lunch. Explore Puerto Varas during time at leisure.

Enrichment: *The History of the Patagonia.*

Day 7 | Puerto Montt | Puerto Natales

After breakfast and free time, transfer  to the airport and fly  to Puerto Natales.

Check in to the Hotel Costaustralis, gaze at sea views from your room and savor regional specialties during dinner at a local restaurant.

Day 8 | Puerto Natales

Balmaceda & Serrano Glaciers. Take in vistas of emerald hillsides, rugged mountains, tall waterfalls and Patagonian birds as you cruise on the Ultima Esperanza Fjord to view the awe-inspiring hanging glacier, Balmaceda, with its blue and white ice. Then, take an invigorating, guided walk amid the unspoiled beauty of Bernardo O'Higgins National Park. See the

spiky Serrano glacier nestled above a peaceful lake where tiny icebergs float.

Relish a delicious lunch at a Patagonian ranch and cruise back to Puerto Natales.

Day 9 | Torres del Paine National Park

Torres del Paine National Park. Spectacular, wild scenery awaits you on a scenic drive in this acclaimed national park, a UNESCO Biosphere Reserve. Gaze in wonder at mirror-like, aquamarine lakes, golden fields, and the dramatic silhouette of the Cuernos del Paine, or Horns of Paine, mountains. At the Salto Grande waterfall, hear the thunderous crash as water cascades from Lake Nordenskjöld into Lake Pehoe.

Ultima Esperanza Sound near Puerto Natales



Punta Arenas





Included Features

Accommodations (with baggage handling)

- **3 nights** in Santiago, Chile, at the first-class Hotel Cumbres Lastarria.
- **3 nights** in Puerto Varas at the first-class Enjoy Puerto Varas Hotel.
- **3 nights** in Puerto Natales at the first-class Hotel Costaustralis.

Transfers (with baggage handling)

- All transfers in the Land Program: flights and deluxe motor coaches.

Extensive Meal Program

- 9 breakfasts, 5 lunches and 4 dinners, including Welcome and Farewell Dinners; tea or coffee with all meals, plus wine with dinner.

Your One-of-a-Kind Journey

- **Small group:** Sized just right at 28 guests.
- **Enrichment by expert speakers** enhances your insight into the region.
- **Engaging excursions** showcase the local culture, heritage and history.
- **AHI Connects:** Local immersion.
- Welcome Reception to mingle with fellow travelers.
- **Electives** and free time to pursue your individual interests.
- A personal VOX headset to hear your English-speaking guide clearly.
- Tipping of guides and drivers.
- Complimentary travel mementos.
- **AHI Sustainability Promise:** We strive to make a positive impact wherever we travel.

Take a break mid-tour for lunch at Lago Gray, and make the most of photo stops en route.

Day 10 | Punta Arenas | Santiago

Punta Arenas. After breakfast, head toward Punta Arenas. Then, take a panoramic tour of this historic port city set on the Strait of Magellan between the Atlantic and Pacific Oceans. Before the Panama Canal opened in 1914, it was a steamship refueling station and the center of the Chilean wool industry. See the city's highlights, including mansions built by wool barons in its heyday.

Transfer ➡ to the Puerto Natales airport, fly ✈ to Santiago and check in to the Hotel Cumbres Lastarria.

Tonight, gather at a restaurant for a Farewell Dinner in honor of your Chilean adventure!

Day 11 | Santiago

Free Time: Create your own agenda in this vibrant city or join today's Elective Activity.

Elective | Viña del Mar & Valparaíso.

Travel to the picturesque coastal resort area of Viña del Mar and oceanside Valparaíso, to see its historic squares and *cerros*, or hills, packed with colorful houses, quaint funiculars and bold street art. Take a funicular up Cerro Bellavista with free time for lunch and to visit Pablo Neruda's hilltop house, if desired.

Transfer ➡ to the airport for your international flight ✈ home. Based upon flight schedules, some travelers may arrive home today.

Day 12 | In Transit

Arrive home in your gateway city.

Note: Itinerary may change due to local conditions.

✈ Flights and ➡ transfers included for AHI FlexAir participants.

🕒 Elective experiences available at an additional cost.

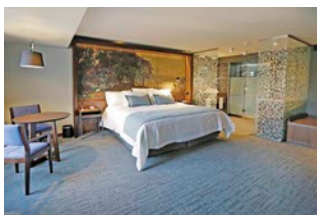
ACTIVE TRAVEL

This **Active Program** is designed for people who are in good health and can comfortably participate in a demanding daily schedule of physical activities. For more details, please call or visit our website.

Excursions on this program require:

- walking distances of up to 3-5 miles
- walking on cobblestones, unpaved paths and/or uneven surfaces
- getting on/off motor coaches and boats

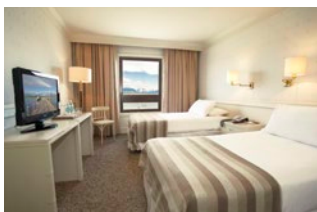
Accommodations



Hotel Cumbres Lastarria | Santiago



Enjoy Puerto Varas Hotel | Puerto Varas



Hotel Costaustralis | Puerto Natales



EXTEND YOUR STAY



Atacama | 3 Nights

{ Elective POST-Trip Extension at an additional cost }

Explore the jaw-dropping beauty of the Atacama Desert! This extension includes three nights at the deluxe Hotel Cumbres San Pedro de Atacama; guided tours every day to see dramatic landscapes and breathtaking sunrises and sunsets; daily breakfasts; the services of an AHI Travel Director and AHI Hospitality desk; guide gratuities; baggage handling; and all taxes and service charges.

\$2,495 per person, double occupancy | \$2,890 single occupancy

Reserve your trip today!

To book your journey,
please call our AHI Travel Experts
at **800-323-7373** or
visit **aadc.ahitravel.com**.

Program Dates

Travel dates †

January 27 – February 7, 2025

† Travel dates include any overnights required for international travel. These dates may vary depending on air schedules.

Tour dates*

January 28 – February 6, 2025

* Tour dates begin on the scheduled arrival date at your destination and end on the scheduled departure date from your destination.

Land Program

Full Price **\$6,140**

Special Savings **\$750**

Early Booking Special Price* **\$5,390**

*Early Booking Special Price valid if booked by date on address panel and paid in full at booking. If you pay only your deposit by early booking date, you still save \$250 per person.

VAT in the amount of \$395 per person is included in the above prices. All prices quoted are in USD, per person, based on double occupancy and do not include air transportation costs (unless otherwise stated). Special offers, promotions and discounts cannot be combined.

Single accommodations are an additional \$995 (limited availability).

Please note: Program-specific terms and conditions are available at <https://aadc.ahitravel.com/destinations/1869A?schoolId=248>. You can also request a copy from our travel experts.

Any payment to AHI Travel constitutes your acceptance of the terms and conditions set out therein, including but not limited to the cancellation terms.

AHI FlexAir

Let us arrange your flights

Our experts are ready to assist you in booking flights. Our personalized air program offers the following advantages:

- **price guarantee** to protect you from fuel surcharge increases after ticket purchase
- arrival and departure **transfers** on group dates
- **flexibility** to change or cancel your reservation before departure on most flights. (Fees may apply)
- **assistance** in the event of schedule changes or delays



Lake Pehoe

Torres del Paine National Park

This sublimely beautiful national park stretches across 935 square miles in Chile's southern tip. Founded in 1959, its astonishing landscape encompasses turquoise lakes, glaciers, rolling valleys, snowcapped summits and sculptural icebergs. Its crowning jewels are the Cuernos del Paine mountains and the craggy trio of steel-gray granite peaks, the Torres del Paine, or Towers of Paine, that jut up into the clouds. An abundance of wildlife adds to the park's allure. Approximately 25 species of mammals live within the park, including the guanaco, a close relative of the llama; gray and red foxes; the endangered Patagonian huemul deer; and the puma, the largest and most elusive. Andean condors swirl in the skies above, and flightless, ostrich-like birds called Lesser Rheas sprint across the grasslands propelled by their large wings.

AHI Travel Expertise



From your reservation to your return home, we are here to ensure you have the adventure of a lifetime.

Before you go:

Travel Consultants stand ready to answer your questions as they guide you through the reservation process.

Travel & Air Coordinators each offer their personalized assistance with flights, electives and special requests.

Travel Information provides pre-departure details and enrichment about your destination.

Once you arrive:

Your Travel Director, a seasoned, multilingual professional, manages daily logistics so you enjoy a seamless experience.

Handpicked Expert Guides offer fascinating insights and share their passion for their country with you.

Knowledgeable Lecturers deepen your appreciation for the region and its history, culture and current events.



Cathedral, Santiago



Associate Alumnae of Douglass College
181 Ryders Lane
New Brunswick, NJ 08901-8557

CHILE25 308

800-323-7373
aadc.ahitravel.com
www.douglassalumnae.org



Bask in Chile's epic, natural landscapes and warm culture!

AHI Travel's mission is to deliver inspirational, educational and cultural programs that delight travelers.

With AHI you can rely on:

- Experienced Travel Directors who attend to every detail of your journey.
- An exceptional travel value.
- Unique access to local sites.
- Flexibility and customization.
- Safety and security.



Please call or refer to our website for the most current program information, discounts and pricing.

Presorted Std.
U.S. Postage
Paid
AHI Travel